



# AI, Shaken not Stirred

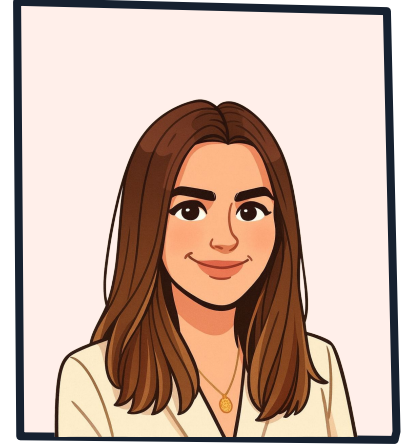
Building Agentic Intelligence with RAG



# About Us



Maarten  
Vandeperre



Camille Nigon



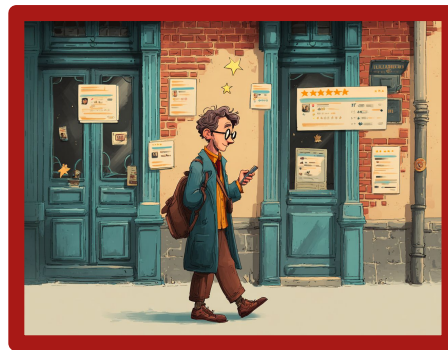
# Three Friends going to a bar..



Fine-Tuna



Agent Gaga

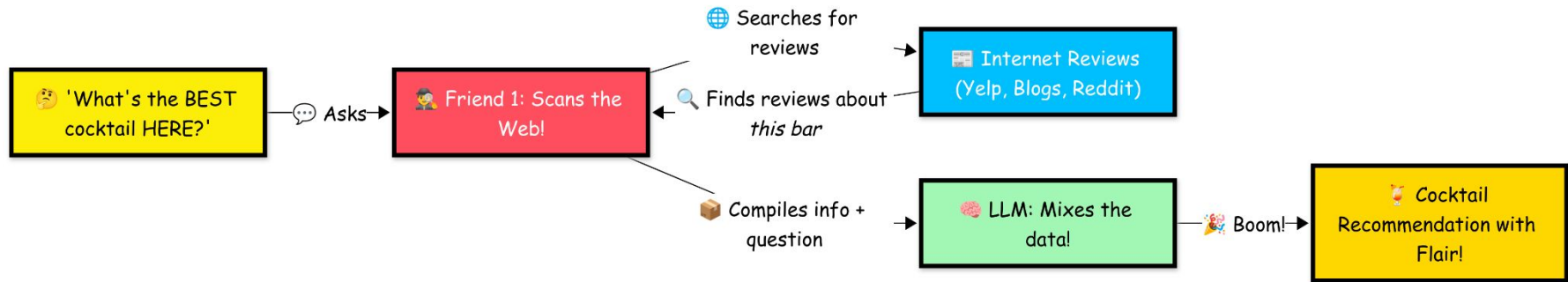


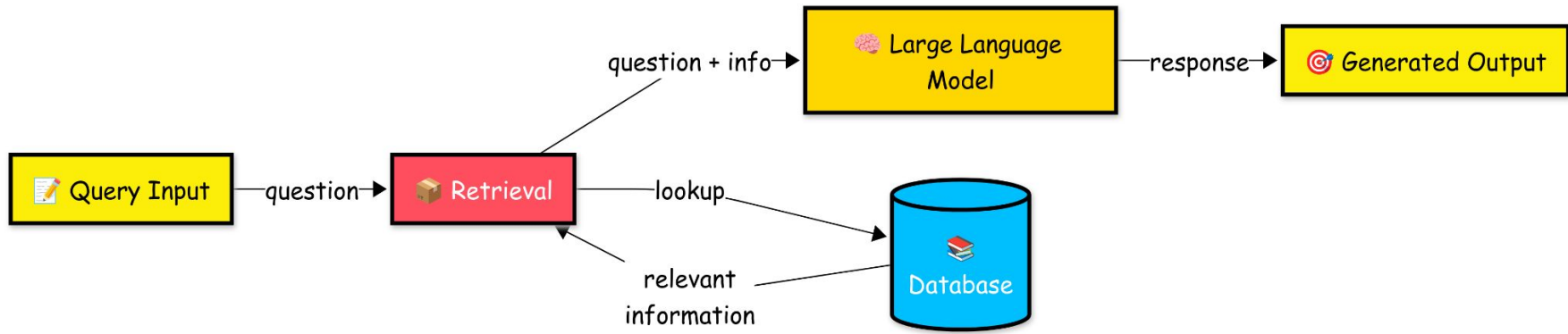
Retrievee

# Meet Retrievee

- Immediately pulls out phone.
  - Orders based on a 4.3-star review from 2017.
- Knows nothing, but finds everything.







# Meet Fine-Tuna

- Always orders the same thing.
  - Panics if the menu changed.
- Memory-based. No improvising.



# RAG vs Fine Tuning



	RAG	Fine-tuning
External Access	Yes	No
Response Time	Slow	Fast
Knowledge Update	Easy	Difficult
Adaptability	High	Lower
Inference Cost	Higher	Lower

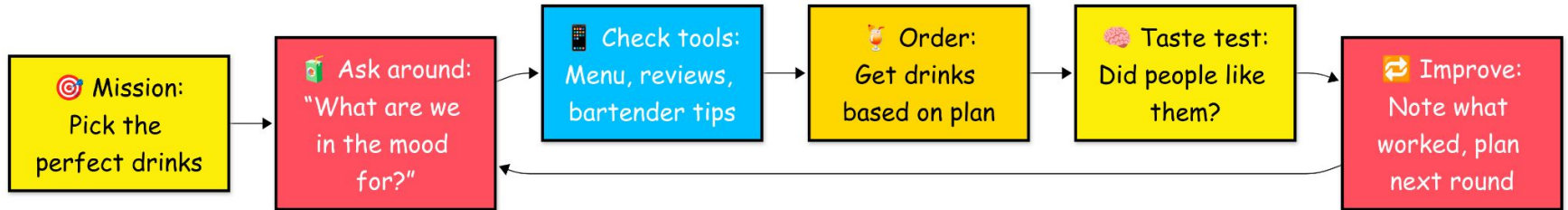


# Meet Agent Gaga

- Already talked to the bartender.
- Pre-ordered your drinks.

→Combines memory, research, and vibes.





# The risks

Lack of transparency  
→ No clear accountability



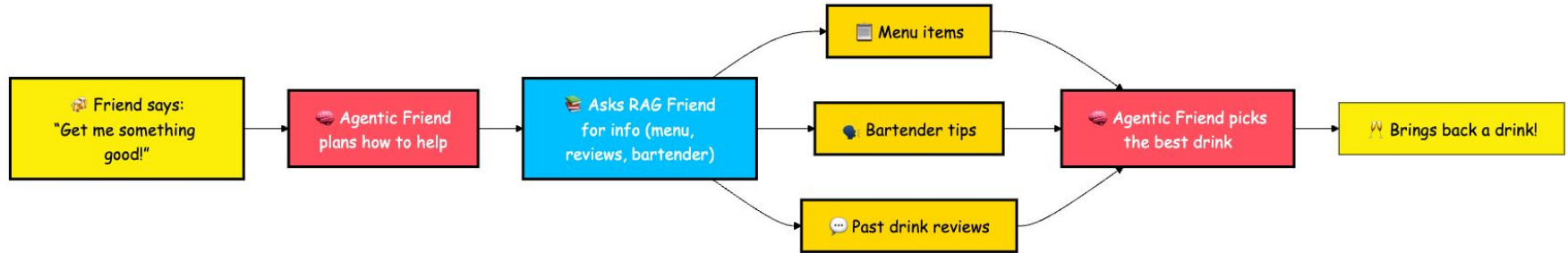
# Agentic + RAG



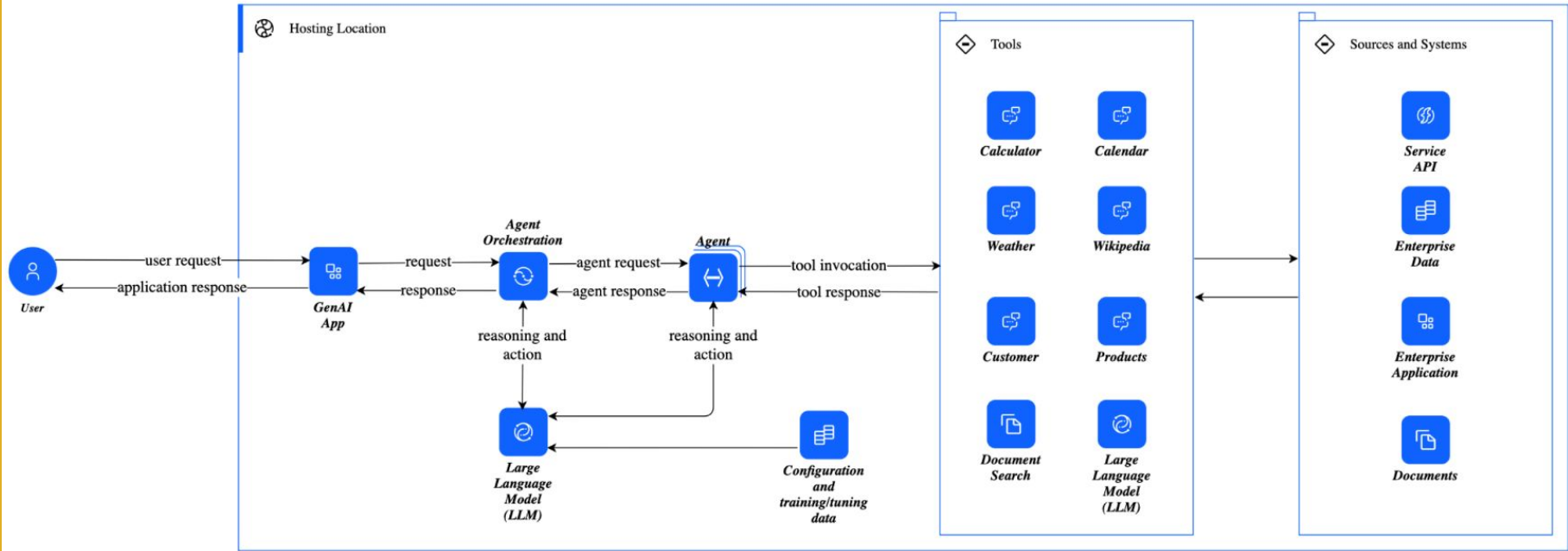
+



# AGENTIC RAG

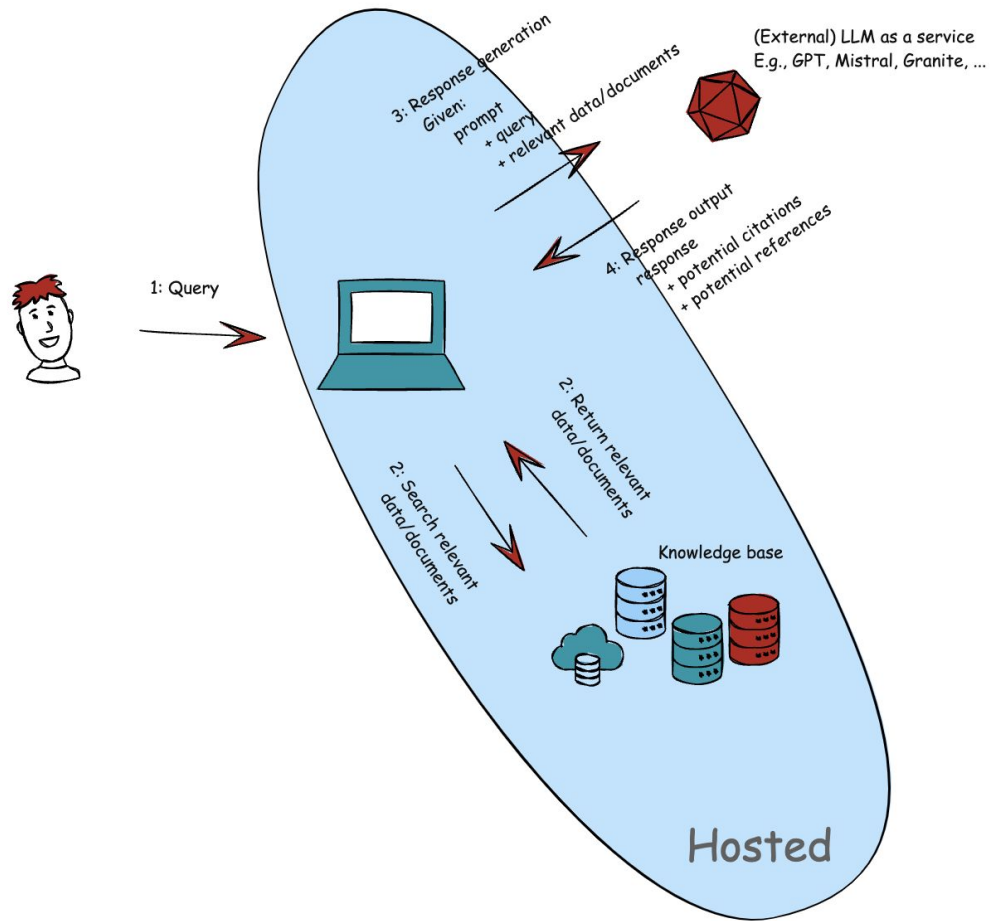


# AGENTIC RAG

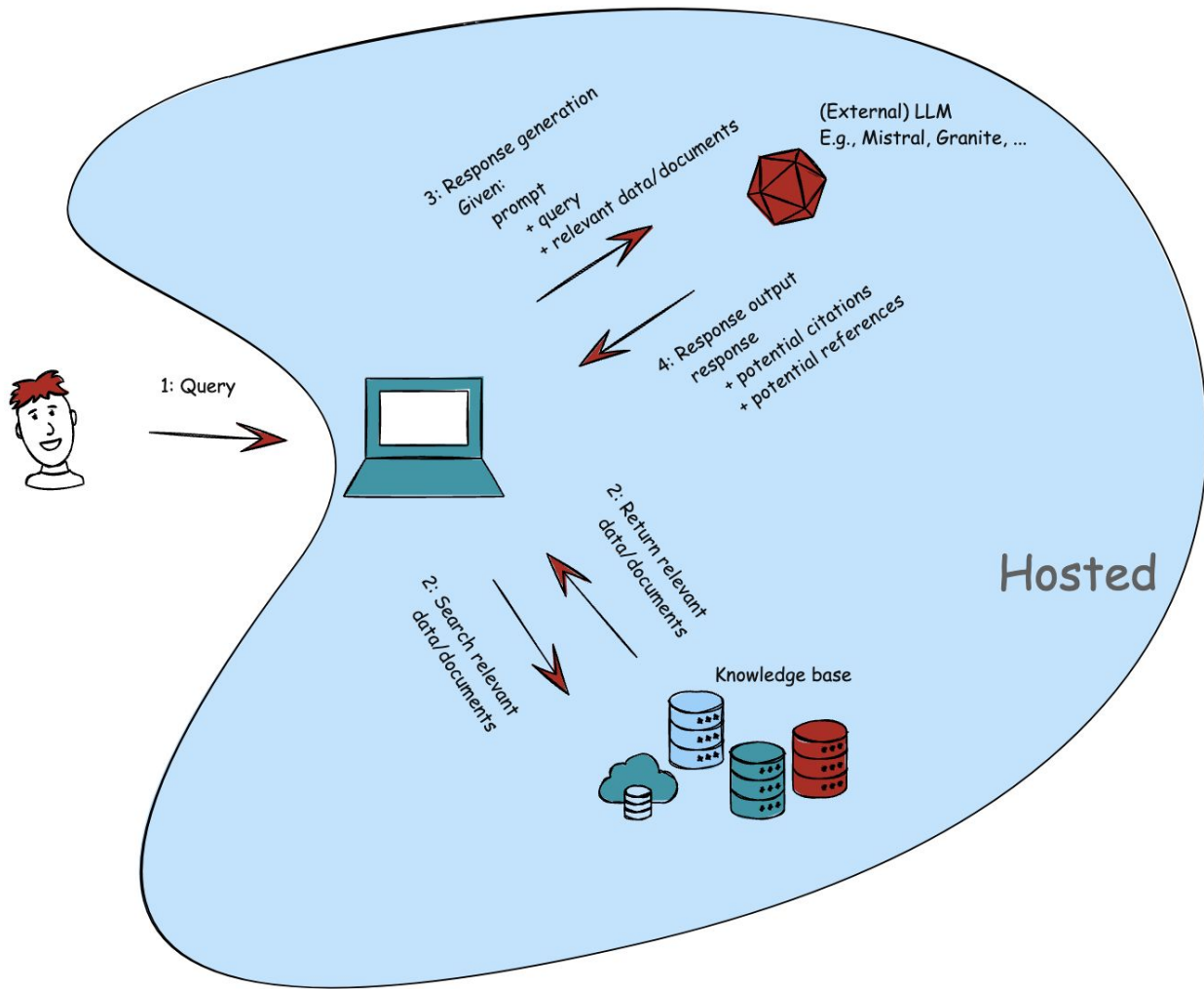


The background of the slide is a vibrant blue with a sunburst or radial pattern. Numerous lines of varying shades of blue emanate from a single point at the bottom center, spreading outwards towards the top corners of the frame.

**Now, let's check out the DEMO**







## Chatbot



Hello, how can I help you?

who is kafka?

Franz Kafka was a Czech-language writer known for his surreal and existential works that explore themes of alienation and bureaucracy.

and how is he related to AI? e.g., emergency stop

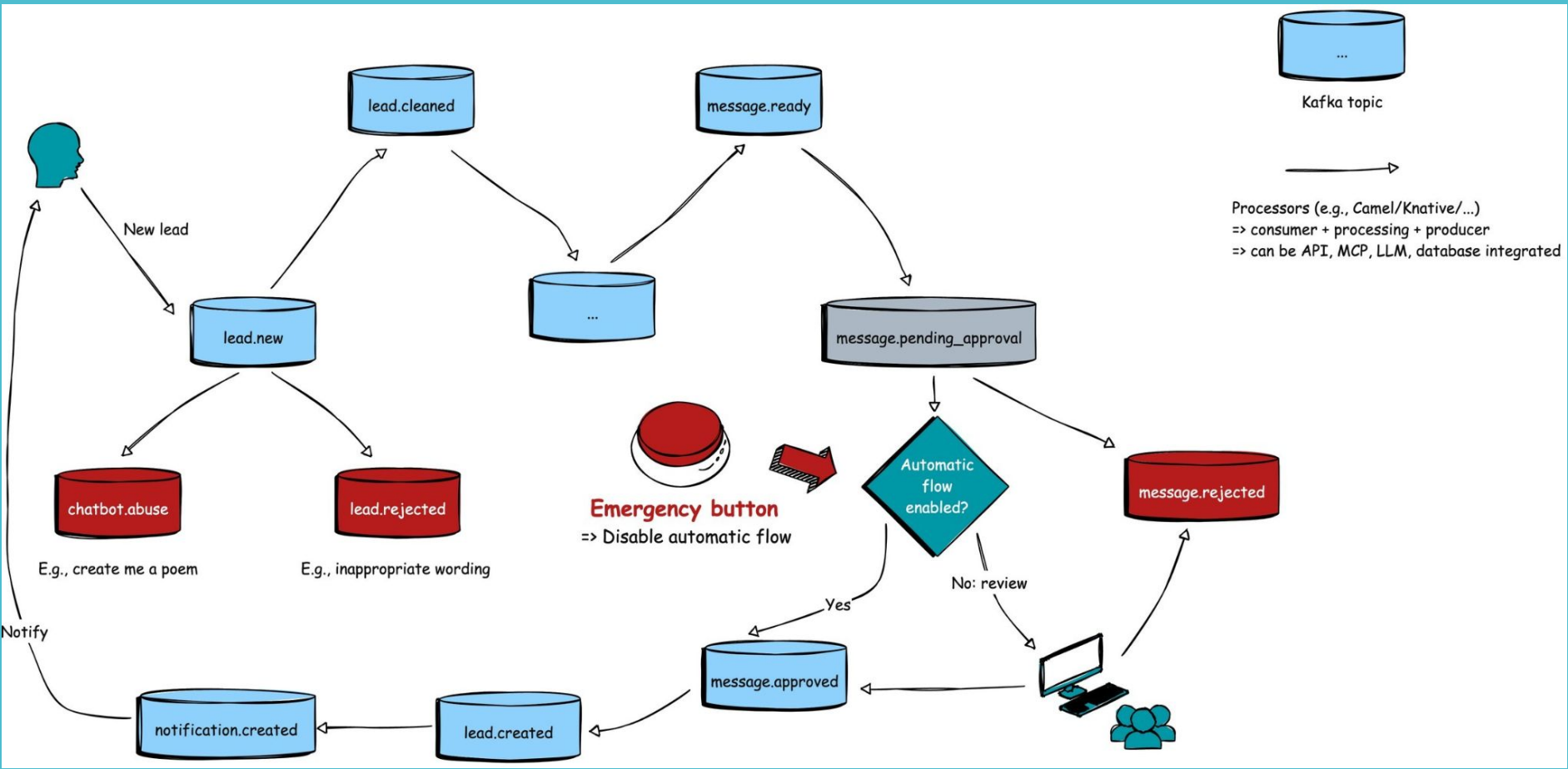
I do not know who this is. Try again!

who is kafka? and how is he related to ai?

Kafka is a software framework that acts as the backbone of agentic AI, facilitating real-time data processing and communication.

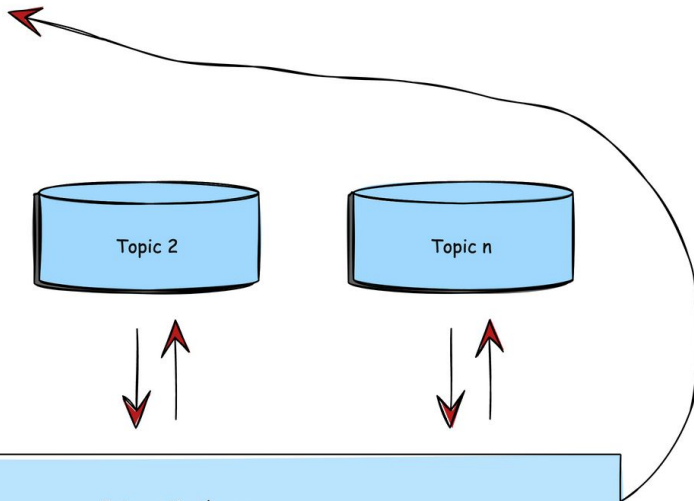
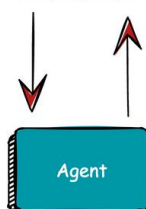
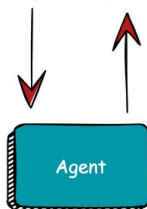
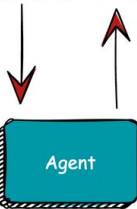
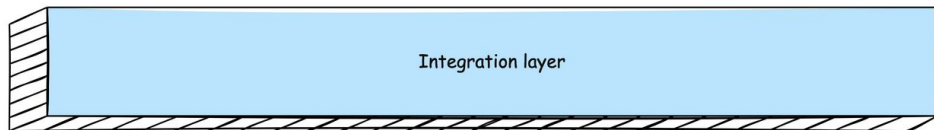
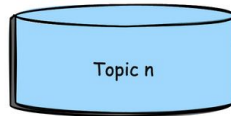
who is kafka? And how does Kafka and a service mesh help with AI?

Kafka is a distributed streaming platform that can help agentic AI by managing real-time data flow, enabling efficient communication and processing between microservices in a service mesh architecture.

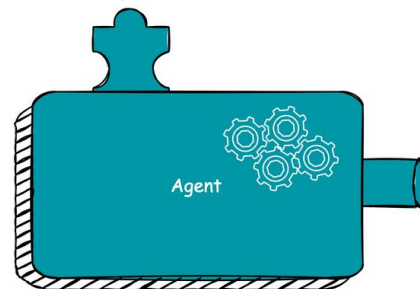




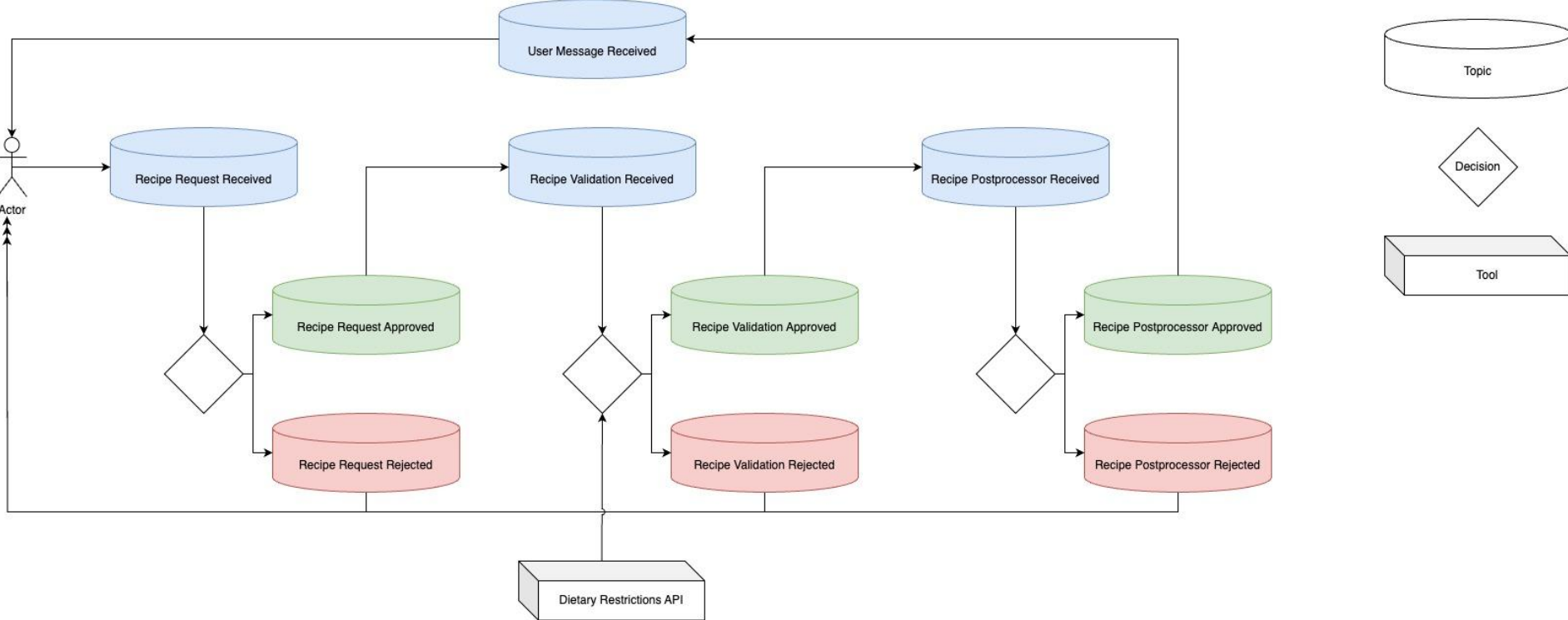
1: Query



Input



Output



...and who are you?

