



Server in Minutes – Clinical trials where everyday counts

Presented By:

Cormac Dunne
Senior Director, IT Operations

Oct 2025



The future of clinical development

Evolving today's best practices to meet tomorrow's challenges.



ICON is expanding the possibilities of clinical research and delivering a better, more impactful tomorrow for our customers, partners, and patients.

As the world's largest and most comprehensive clinical research organisation powered by Healthcare Intelligence – the harmonisation of our experience, expertise, insights, data, and technology – we effectively perform the vital, day-to-day functions of a CRO while innovating processes to make clinical operations even more efficient. We strive to work as a **trusted partner**, guiding our customers through the ever-evolving landscape of clinical development so they can better achieve their business goals.

Partnership



Sir Steve Redgrave



Olympics 2000 Sydney



WILL
IT
MAKE
THE
BOAT
GO
FASTER !



- Amazing Story
- First Recipient of CART-Therapy
- 22-month battle
- Rollercoaster of emotions
- Fire with Fire –Dr Carl June
<https://www.youtube.com/watch?v=7-2aHlp9lt4>

The Emily Whitehead Foundation



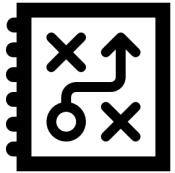
- Tom Whitehead
- Cancer free to Cured
- Foundation activities
- Insights from inside the trial



WILL IT MAKE THE CLINICAL TRIAL GO FASTER



Challenge



The team to find processes, WPs and SOPs that we can do more efficiently

Engage



With stakeholders to identify their bottlenecks

Review



Be relentless in asking the question

Project Objective:

Reduce the time it takes to deploy servers from weeks to minutes using automation.



- **Consistency**



- **Speed**



- **Scalability**

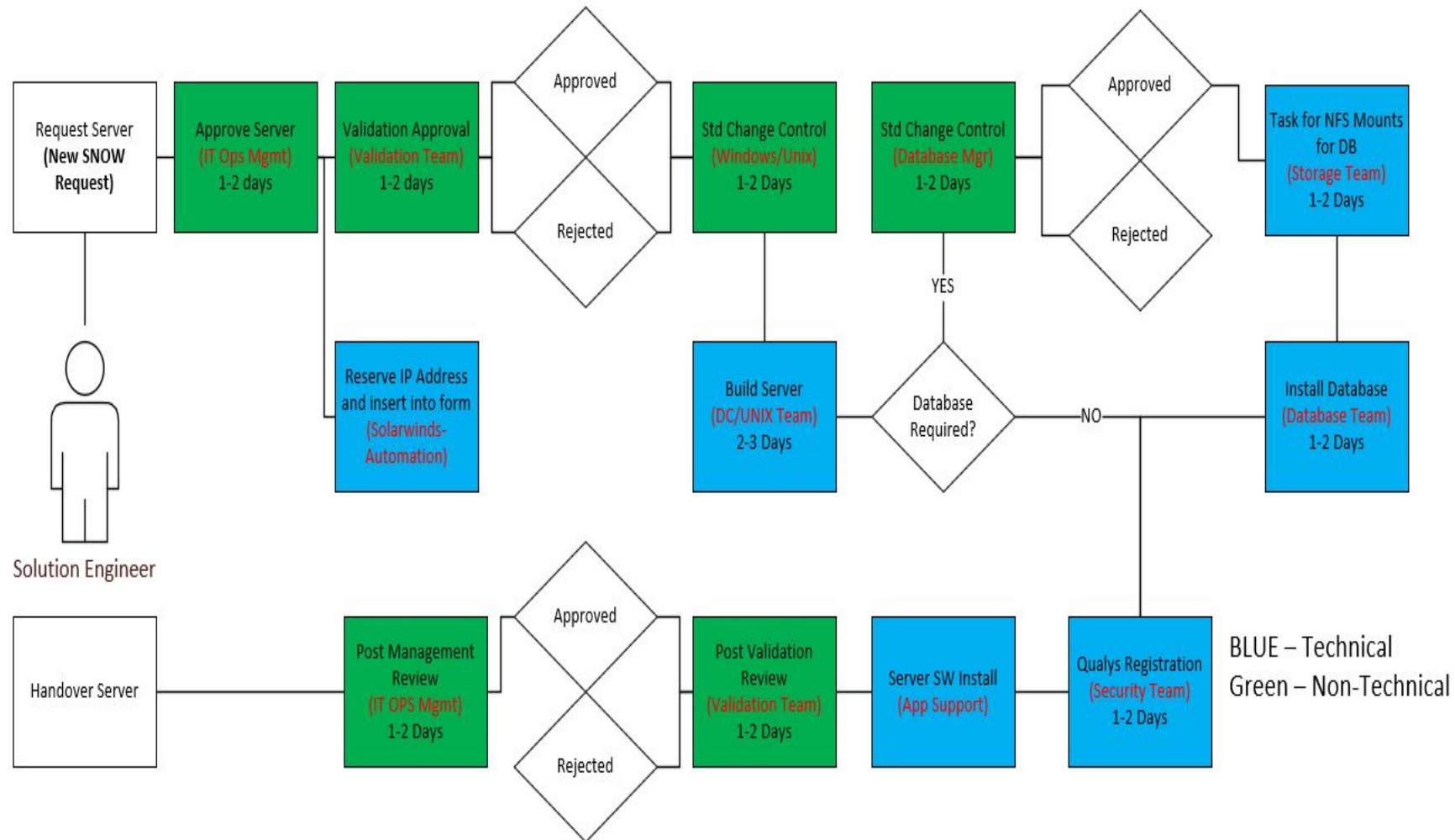
- **Security**



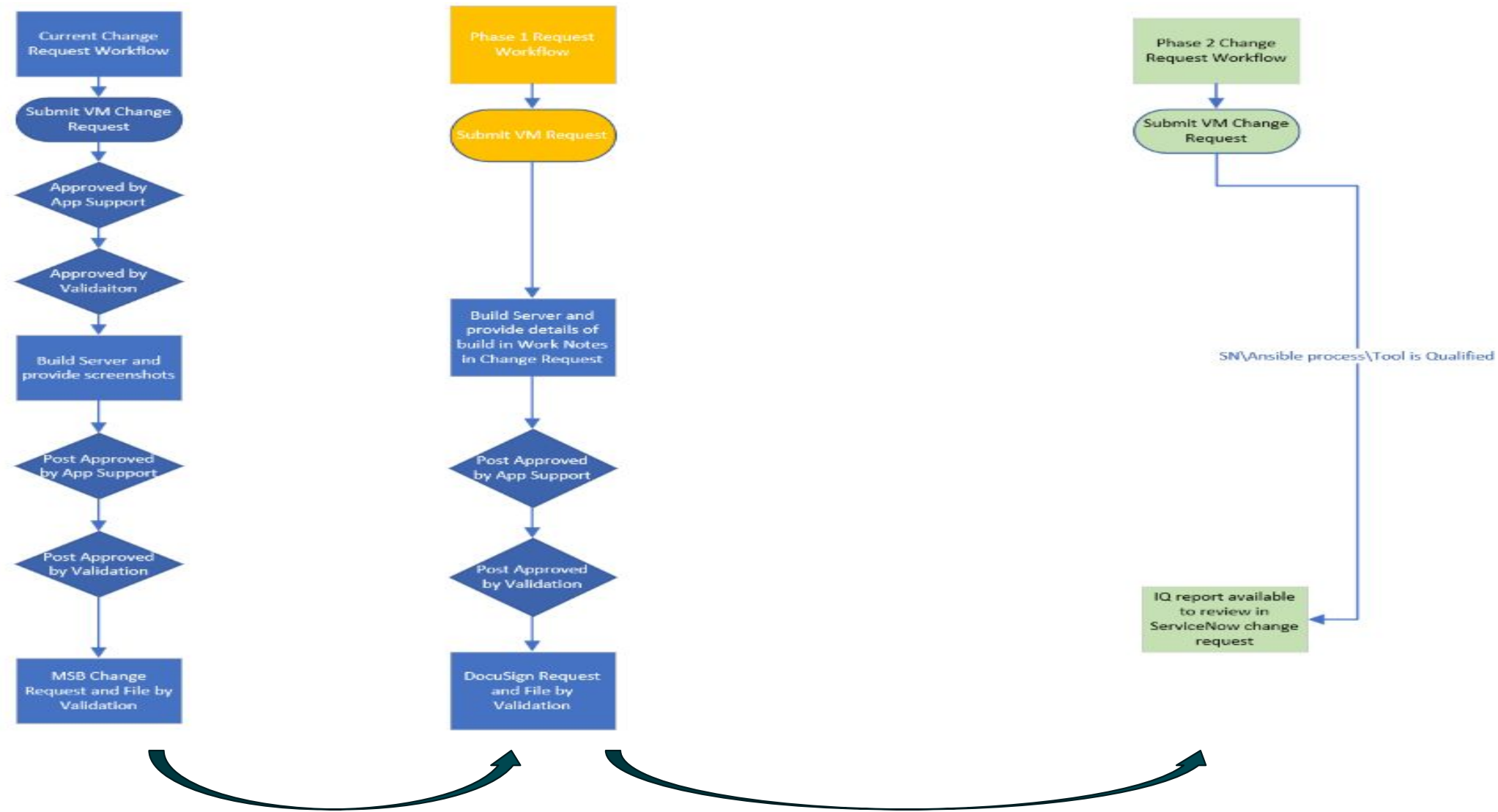
- **Cost Savings**

- **Improved Reliability**

Delivering GxP Infrastructure – old process



Server in Minutes – GxP considerations



29 minutes !

- Server is built
- Server is registered our CMDB
- Server has reserved IP address
- Server DNS hostname is registered
- Middleware or Database is installed
- Server is moved to correct network segment
- Access is provisioned, user receives an email
- Monitoring is enabled
- Security and patching tools are installed and registered
- Server is qualified with validation
- Evidence of IQ is stored in GXP repository ready for review and audit

Server in Minutes

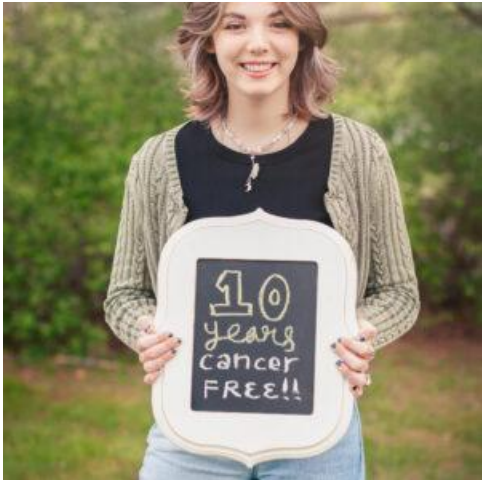
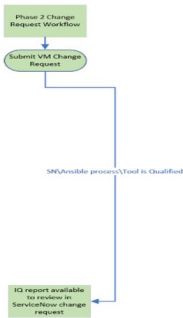
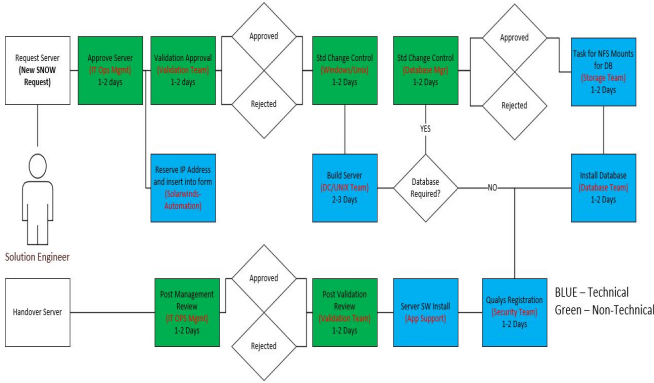


#	Description	Time	Volume	Time Savings
1.	Old way – Server Build	~2 days	724 per year	
2.	Old way – Output/Delivery	- 2 weeks		
3.	New way – Server Build	- 30 mins	~724 per year	5068 hours or 633 workdays per year
4.	New way – Output/Delivery	- 30 mins		2 weeks back

Can we go faster ?



Why every day counts



Thank you for your time