

Welcome to Red Hat Summit: Connect Helsinki



Mikko Pylväs

Country Manager
Finland and Baltics
Red Hat

Lead sponsor



Gold sponsors



Silver sponsors



- Collaboration, Transparency and Community-driven Innovation
- Open hybrid cloud
- Digital sovereignty
- Sovereign AI
- Adaptable enterprise



Gartner predicts **70%** of enterprises adopting gen AI will cite **sustainability and digital sovereignty** as top criteria for selecting between different public cloud gen AI services by 2027



70%

Red Hat's approach to digital sovereignty

Our five core commitments

Open source
software

Provides
transparency
and trust

Open hybrid
cloud

Provides control
and choice

Critical
infrastructure

Robust
protection,
operational
resilience and
stability

Local ecosystem
partners

Building and
collaborating
together

Sovereign AI
workloads

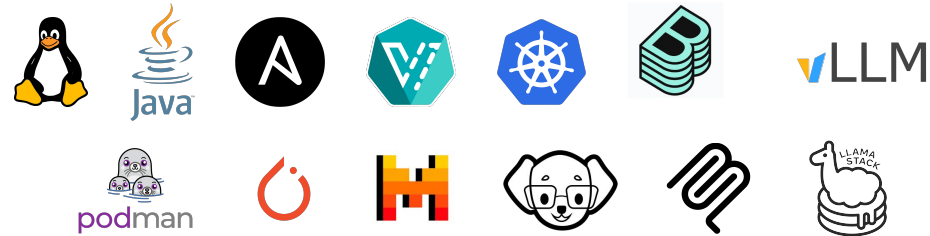
Unlocking the
future

Open source is foundational to digital sovereignty

Open source
software

Provides
transparency
and trust

Technology



Community



Control



Private cloud



Public cloud



Edge

Open hybrid cloud – market recognition

FORRESTER®

- **A Leader in the Forrester Wave™: Multicloud Container Platforms, Q3 2025**
 - **A Leader in the Forrester Wave™: Infrastructure Automation Platforms, Q4 2024**
-



- **Top Badges** – Red Hat OpenShift, Red Hat Ansible Automation Platform, and Red Hat Enterprise Linux

Gartner®

- **A Leader in the 2025 Gartner® Magic Quadrant™ for Container Management**
 - **A Leader in the 2025 Gartner® Magic Quadrant™ for Cloud-Native Application Platforms**
-



- **Top Rated** and **Buyer's Choice** – Red Hat OpenShift, Red Hat Ansible Automation Platform, and Red Hat Enterprise Linux



Connect

Thank you

Thank you!



Dinko Eror

Vice President EMEA,
Central, North, and Eastern Europe
Red Hat



Question 1

Linux installation?

15 billion



Question 2

RHEL server?

15 million



Question 3

Open Source developers?

40 million



Question 4

Companies?

25.000



Question 5

OpenShift developers?

800.000



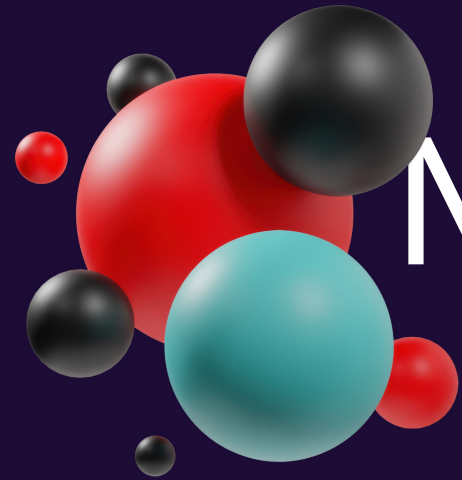
Question 6

Lines of code?

40 million



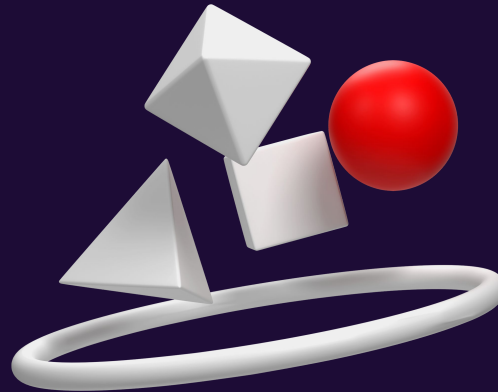
Open Source



My Commitments to You!



Innovation



Customer first, Partner always



NOTE:

The sovereignty and analyst/awards slides should go in the “GM/Regional-Leader Kickoff” section, prior to the keynote.

Gartner predicts **70%** of enterprises adopting gen AI will cite **sustainability and digital sovereignty** as top criteria for selecting between different public cloud gen AI services by 2027



70%

Red Hat's approach to digital sovereignty

Our five core commitments

Open source
software

Provides
transparency
and trust

Open hybrid
cloud

Provides control
and choice

Critical
infrastructure

Robust
protection,
operational
resilience and
stability

Local ecosystem
partners

Building and
collaborating
together

Sovereign AI
workloads

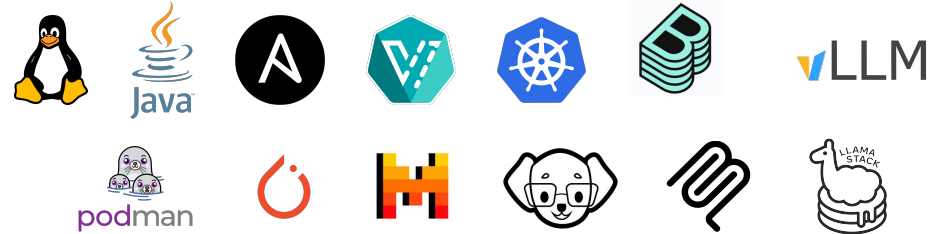
Unlocking the
future

Open source is foundational to digital sovereignty

Open source
software

Provides
transparency
and trust

Technology



Community



Control



Private cloud



Public cloud



Edge

Open hybrid cloud – market recognition

FORRESTER®

- **A Leader** in the Forrester Wave™: Multicloud Container Platforms, Q3 2025
 - **A Leader** in the Forrester Wave™: Infrastructure Automation Platforms, Q4 2024
-



- **Top Badges** – Red Hat OpenShift, Red Hat Ansible Automation Platform, and Red Hat Enterprise Linux

Gartner®

- **A Leader** in the 2025 Gartner® Magic Quadrant™ for Container Management
 - **A Leader** in the 2025 Gartner® Magic Quadrant™ for Cloud-Native Application Platforms
-



- **Top Rated** and **Buyer's Choice** – Red Hat OpenShift, Red Hat Ansible Automation Platform, and Red Hat Enterprise Linux

NOTE:

The main keynote starts here



Connect

Innovate freely, operate efficiently:

Build on a unified AI and application platform

[Keynote Presenter]

[Title]

[City]

[Date]

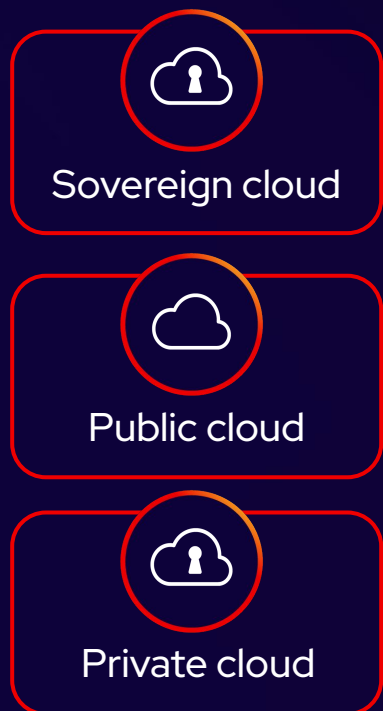
Business is driven by major technology waves

Abstract geometric shapes in the top right corner, including a dark blue triangle and a purple parallelogram.

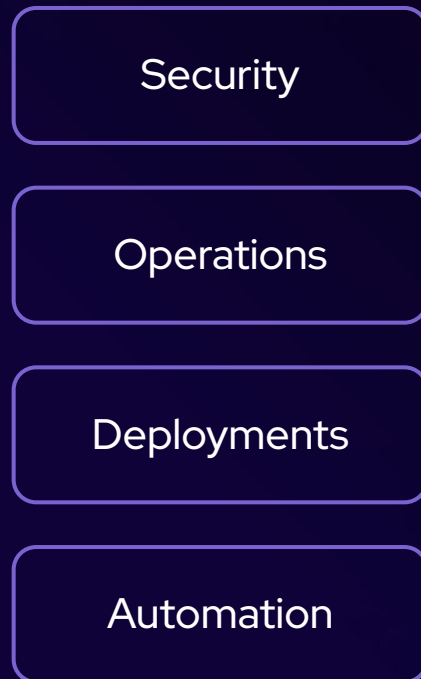
How do we navigate the transition
from the cloud era to the AI era?

Abstract geometric shapes in the top right corner, including a dark blue parallelogram and a lighter blue parallelogram, both with thin red outlines.

What have we learned from the cloud era ?



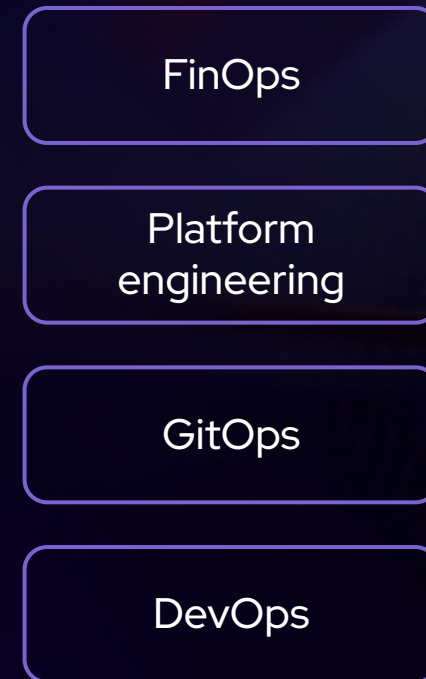
Location



Consistency



Innovation



Collaboration

Open hybrid cloud

Collaboration

DevOps

Platform
engineering

GitOps

FinOps

Workloads

Workloads

Workloads

Innovation

Modern application platform

Consistency

Integrated containers and virtual machines

Consistent, secure infrastructure platform

Automation platform

Location



Physical



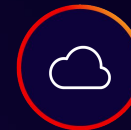
Virtual



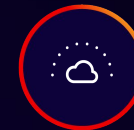
Private



Sovereign



Public



Edge

Building success on Red Hat platforms

3-year ROI

540%

 **Red Hat**
Enterprise Linux^[1]

668%

 **Red Hat**
Ansible Automation
Platform^[2]

468%

 **Red Hat**
OpenShift^[3]

[1] "The Business Value of Red Hat Solutions Versus Non-Paid Open Source Alternatives," IDC, March 2023.

[2] "The Business Value of Red Hat Ansible Automation Platform," IDC, March 2024.

[3] "The Total Economic Impact™ Of Red Hat OpenShift Cloud Services," Forrester Consulting, Feb. 2024.

Building success across cloud providers



Microsoft Azure

Google



ORACLE

NOTE:

Instead of a customer here, it might be good to highlight the Sovereignty discussions that are relevant in specific regions (see slides 45–47).

<Regional Customer Placeholder – Hybrid Cloud>

Use Template from Slides 16-17





"We have 12 clusters across 7 regions, with Red Hat OpenShift standardizing the developer experience regardless of whether it's on-premise or in the cloud. We've streamlined workflows and equipped developers to self-serve with built-in tools with automation (CI/CD), reusable templates, and automated security policies."

Rafael Belanger
Platform Lead,
CAE

Accelerating the developer experience—everywhere

135,000 pilots trained per year

3
clouds

12x
more security
vulnerabilities
fixed

2,000
developers



Abstract geometric shapes in the top right corner, including a dark blue triangle and a purple parallelogram.

Is there still more opportunity to optimize your cloud?

Efficiency



Modernization



Efficiency



Red Hat
Enterprise
Linux 10

Simplify deployments

Ansible
Automation
Platform

Expand automation

Red Hat
OpenShift

Simplify operations

Efficiency



Image mode – Contain drift and accelerate delivery

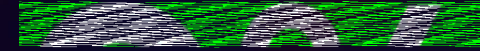
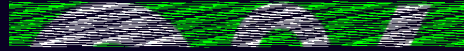


With image mode for Red Hat Enterprise Linux, you can:

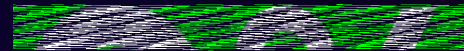
- ▶ **Speed time to market**
using DevOps and CI/CD practices, which now include the OS
- ▶ **Streamline operations**
by automating updates and rollbacks—just like your smartphone
- ▶ **Enhance security**
by reducing your attack surface with immutable system images
- ▶ **Simplify appliance creation**
by combining the OS with apps and drivers for faster development and delivery

~\$

Efficiency



reduction in lead times*



reduction in application

performance errors**



reduction in error
response times*

improvement in server
patching time*

Ansible Automation
Platform

HashiCorp Terraform and Ansible integration

Ansible Lightspeed intelligent assistant

Efficiency

Managed OpenShift in the cloud



Microsoft Azure

Google



ORACLE

Red Hat
OpenShift

OpenShift Lightspeed - AI assistant

Modernization



Modernizing virtualization

Modernizing IT ops
with automation and AI

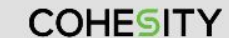
Modernizing developer
productivity

OpenShift Virtualization adoption

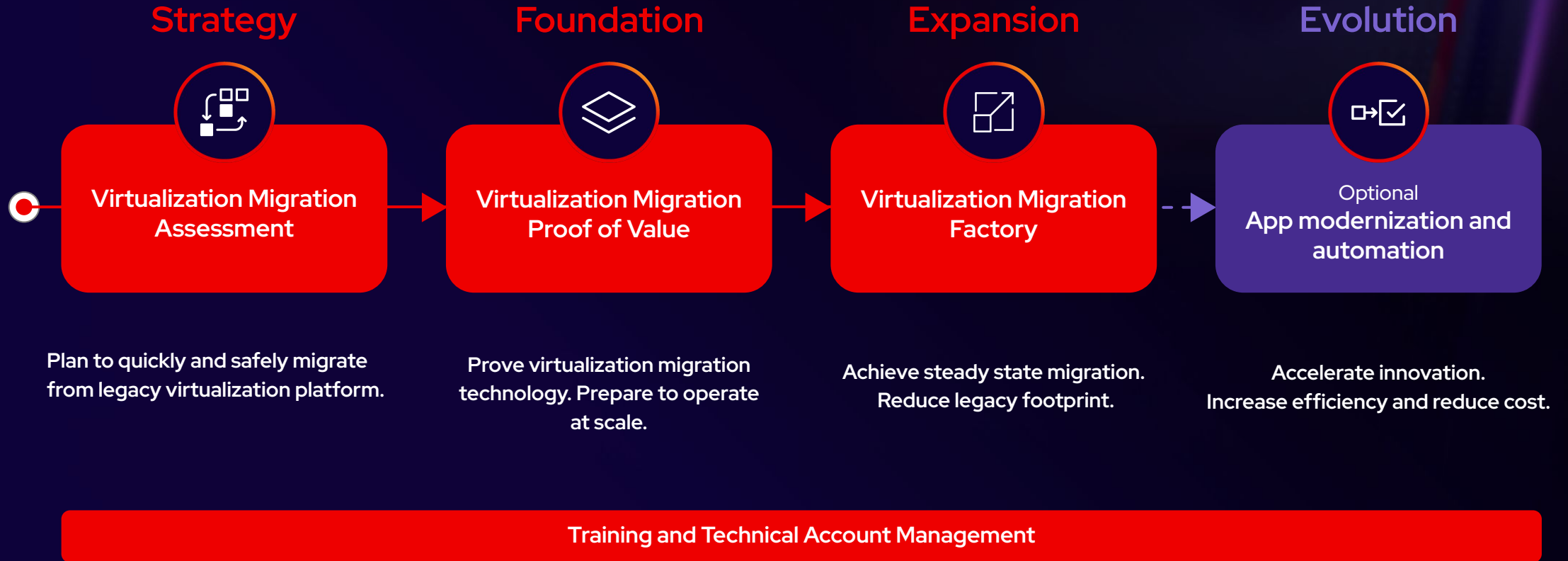




Virtualization partner
ecosystem



Modernizing your virtualization infrastructure



<Regional Customer Placeholder – Virtualization>

Use Template from Slides 16-17



⚙ Administrator ▾

Home >

Operators >

Workloads >

Virtualization >

Migration >

Networking >

Storage >

Builds >

Observe >

Compute >

User Management >

Administration >

Overview

Cluster

▾ Getting started resources ⓘ

📌 Set up your cluster

Finish setting up your cluster with recommended configurations.

Configure alert receivers →

[View all steps in documentation](#) ↗

This is the OpenShift web console, where you can take any action on your clusters.

familiarize yourself with key features.

Impersonating the system:admin user →

Monitor your sample application →

[View all quick starts](#)

Explore new features and capabilities

OpenShift AI →

Build, deploy, and manage AI-enabled applications.

OpenShift LightSpeed →

Your personal AI helper.

[See what's new in OpenShift 4.16](#) ↗

Details

[View settings](#)

Cluster API address

https://api.cluster-
vg8b7.dynamic.redhatworkshops.io:6
443

Cluster ID

314edee9-f885-4cd2-90ed-
d989f50770c8

[OpenShift Cluster Manager](#) ↗

Infrastructure provider

BareMetal

Status

[View alerts](#)



Cluster



Control Plane



Operators



Insights

0 issues found



A cluster version update is available

[Update cluster](#)



ACMThanosCompactHasNotRun

6 Dec 2024, 16:56

[View details](#)

ACM Thanos Compact observability-thanos-compact in open-cluster-management-observability has not uploaded anything for

Activity

[View events](#)

Ongoing

There are no ongoing activities.

Recent events

[Pause](#)

- P Received signal ... >

- P Received signal ... >

17:18 D Updated open-... >

17:18 D Updated open-... >

Emirates NBD



بنك الإمارات دبي الوطني

صراف آلي ٢٤ ساعة
ATM24



نريد أن نساعدك على بناء حياة مثالية
بالتقنيات والحلول الجديدة.
استمع يا أمي يا أبي يا أمي يا أبي
بنك الإمارات دبي الوطني



DirectRemit

دايركت ريميت

أرسل الأموال إلى أحبائك
خلال 60 ثانية

Send money to your loved ones
in just 60 seconds



بنك الإمارات دبي الوطني
Emirates NBD

“Openshift Virtualization provided a well-known interface, reliable and consistent performance. Red Hat’s strong innovation and engineering capability, excellent support and well-defined technology roadmap provided us with much needed certainty in a challenging environment.”

Nick Grimm

Head of Cloud Compute,
Emirates NBD

Real-world, large-scale virtualization migration

9,000+
virtual machines migrated

70%
app landscape
running on RHEL

140
average VMs
migrated per night

37,000
containers on
OpenShift





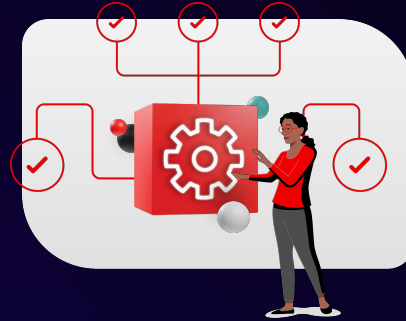
interact.redhat.com

Modernizing IT operations



Standardize automation
operations

Ansible Automation Platform



Event-driven automation &
AIOps

Event-Driven Ansible +
Ansible Lightspeed



Policy enforcement of all
automation

Ansible Policy as Code

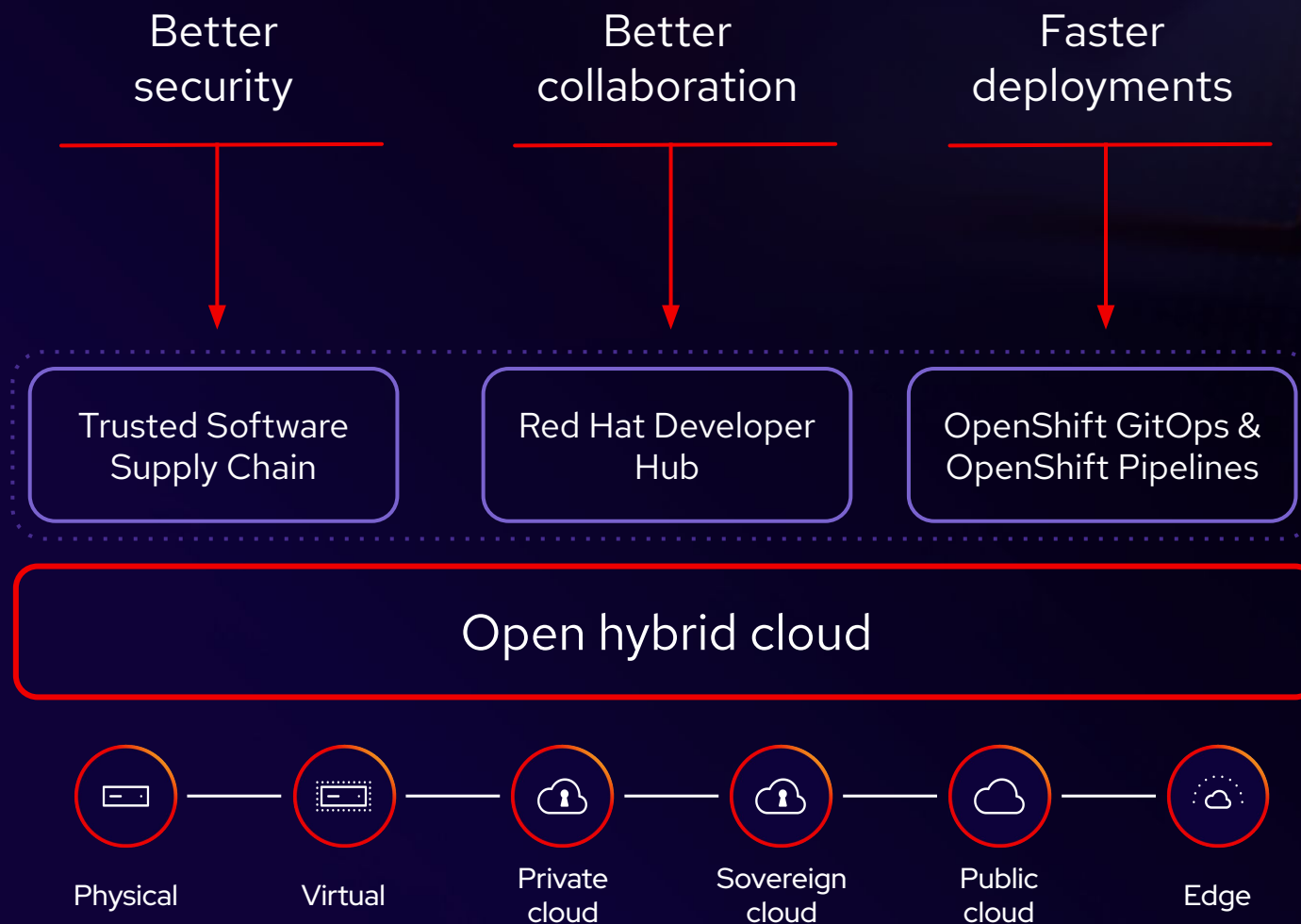
86%
of organizations are
developing cloud-native
applications¹

76%
of organizations say
learning our architecture requires
high cognitive load, limiting
productivity¹

156%
YoY growth of
malicious packages²

Modernize developer productivity

Red Hat Advanced Developer Suite



[1] "State of Platform Engineering in the Age of AI," A Red Hat report, conducted by Illuminas, Oct. 2024.

[2] "State of the Software Supply Chain," Sonatype, Oct. 2024.

Abstract geometric shapes, including a large light blue triangle and a smaller yellow triangle, are positioned in the top right corner of the slide.

How do we navigate the transition
from the cloud era to the AI era?

<Regional Customer Placeholder – AI>

Use Template from Slides 16-17





“Thanks to Red Hat and OpenShift AI, our business teams—our citizen data scientists—can build their own models quickly and independently.”

—
Emre Yavuz

Head of Data and AI,
Turkish Technology - Technology
Company of Turkish Airlines

Accelerating the developer experience—everywhere

\$10M

saved annually in fuel costs

Dynamic pricing

Fraud prevention

Customer service

Operations optimization

Logistics optimization

60

AI models in
production

40

AI models in
development



Abstract geometric shapes in the top right corner, including a dark blue triangle and a purple parallelogram.

How can we prepare for AI success ?

AI is a strategic enabler across industries

Predictive AI runs businesses today; generative AI brings innovation to the enterprise

Revenue generation

- ▶ Chatbots
- ▶ Campaign and content marketing
- ▶ Developer assistants
- ▶ Guided selling
- ▶ Product innovation

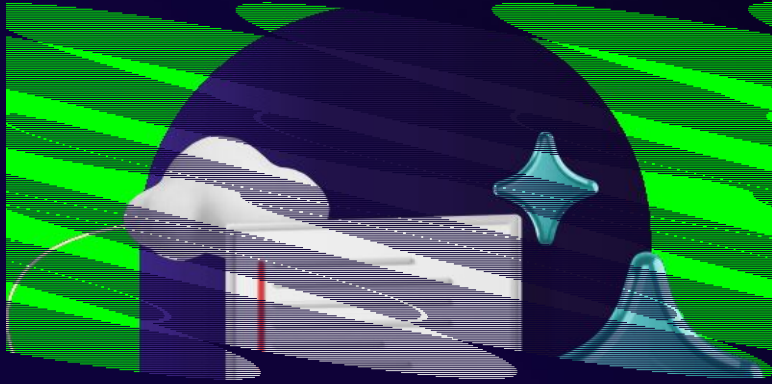
Cost optimization

- ▶ Automated AI support
- ▶ Knowledgebase search & summarization
- ▶ Doc summarization
- ▶ AI-optimized logistics
- ▶ Augmented product R&D

Risk management

- ▶ Sentiment analysis
- ▶ Predict employee attrition
- ▶ Contract risk assessment
- ▶ Fraud detection
- ▶ AI-assisted security operations

AI demand is high, but there are risks



55%

of leading digital organizations picked AI as a top new investment priority ¹

58%

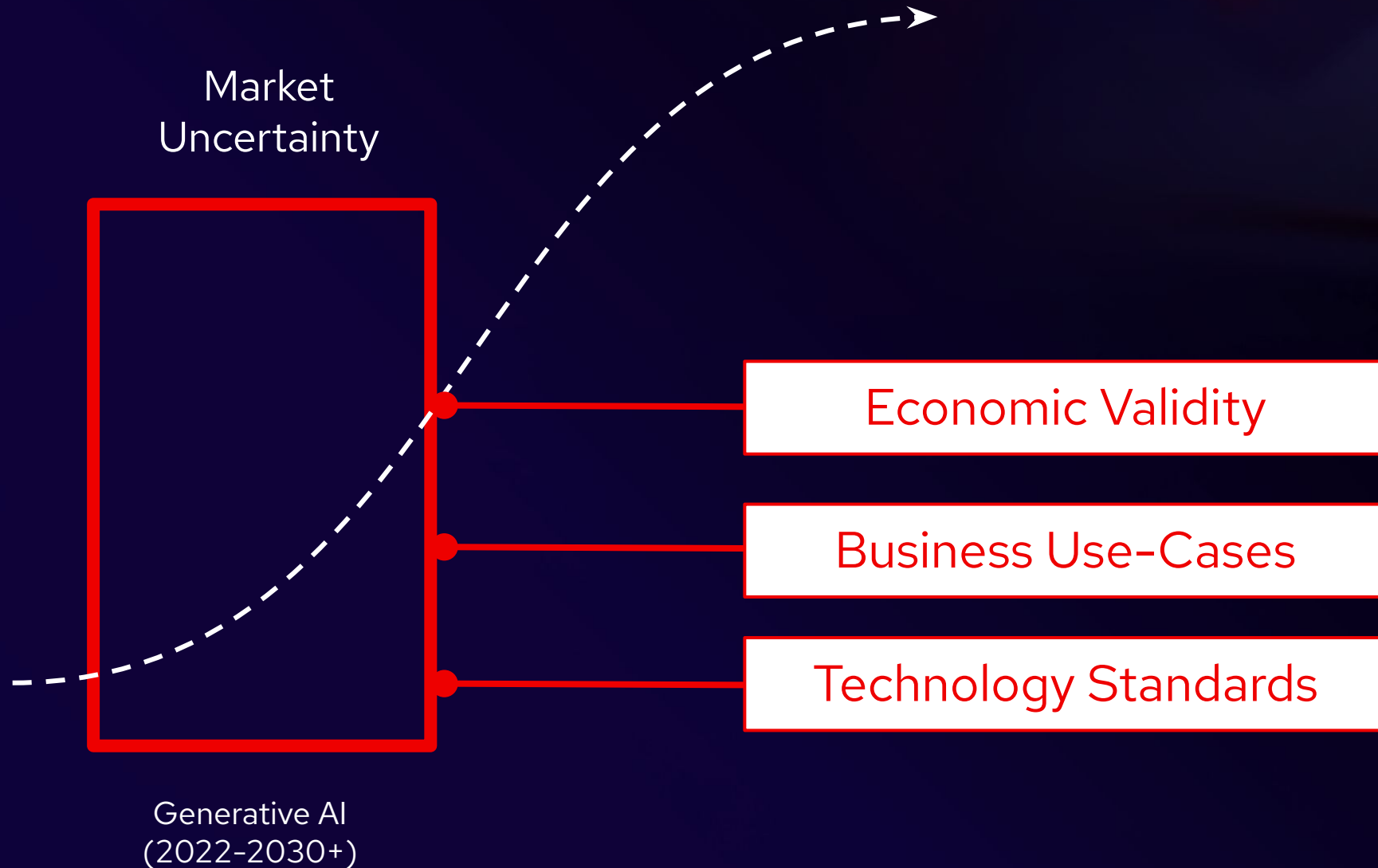
of CIOs will spend more than 5% of their CY25 IT budget on gen AI ²

A striking number of executives believe that **AI is going to revolutionize their business.**

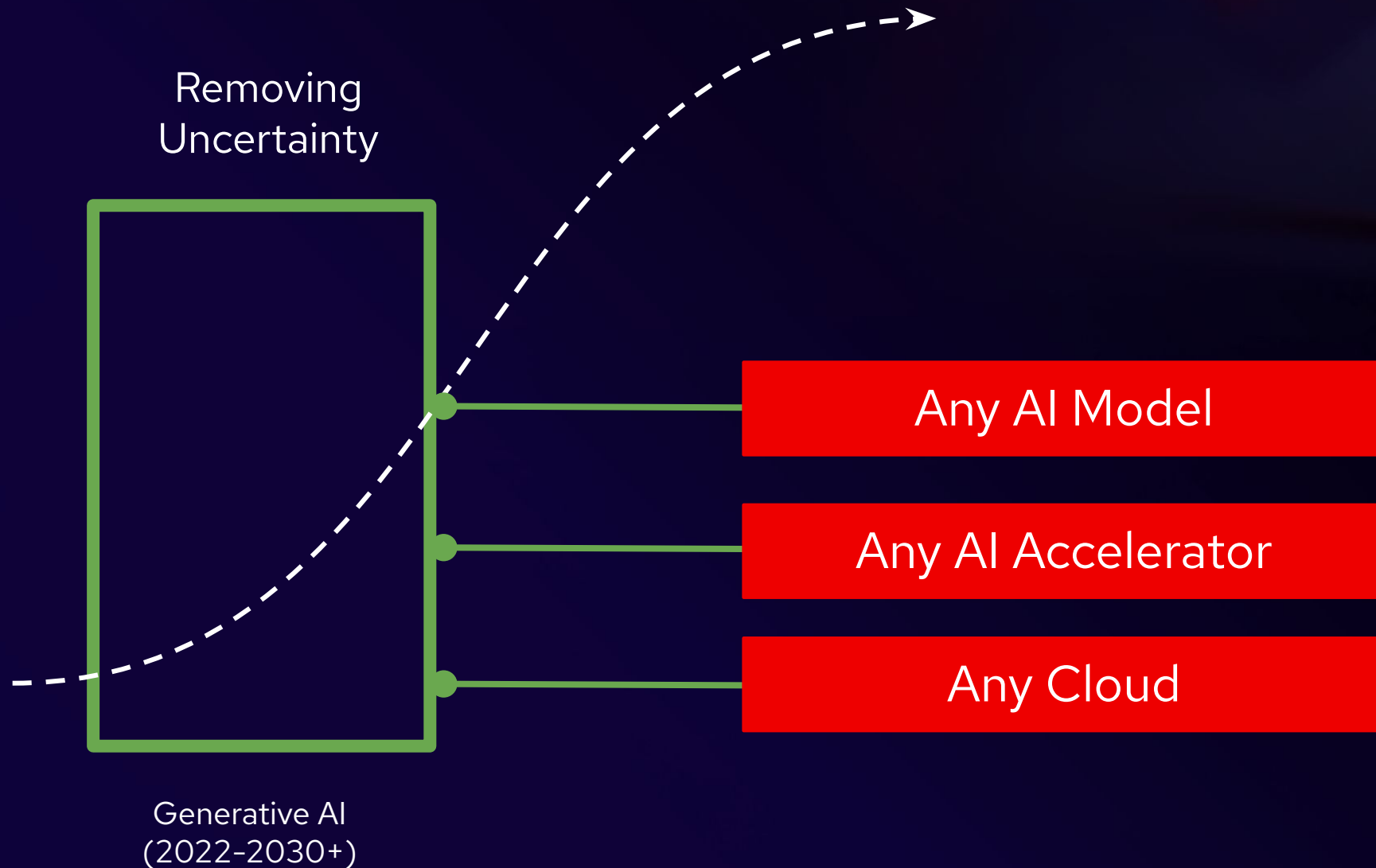
95%

Of organizations are getting zero return on their Gen AI projects ³

The uncertainty of the AI transition



Red Hat and AI - Enabling AI Success



Red Hat AI 3

Single Platform for Any Model, Any Accelerator, Any Cloud



 **Red Hat AI**

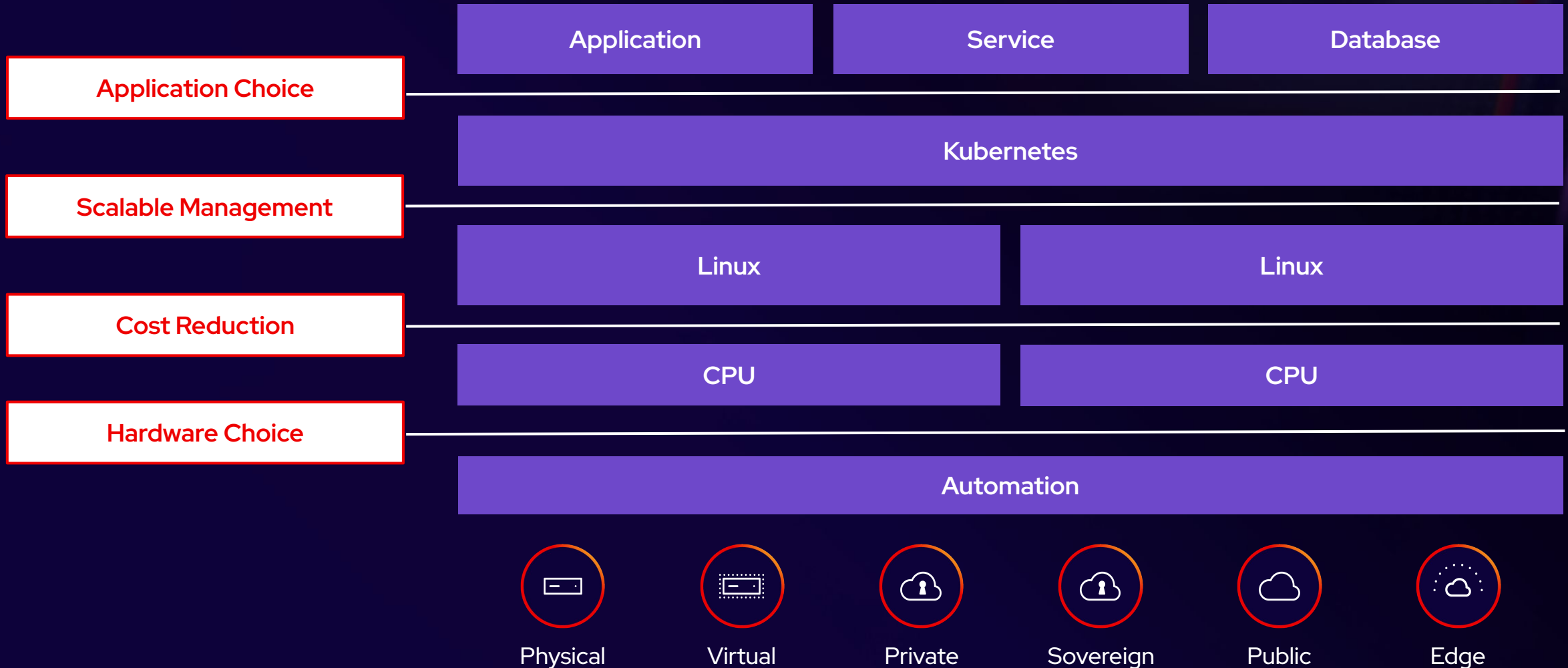
Flexible, Efficient
Inference

Connecting Models to
Data

Agentic
AI

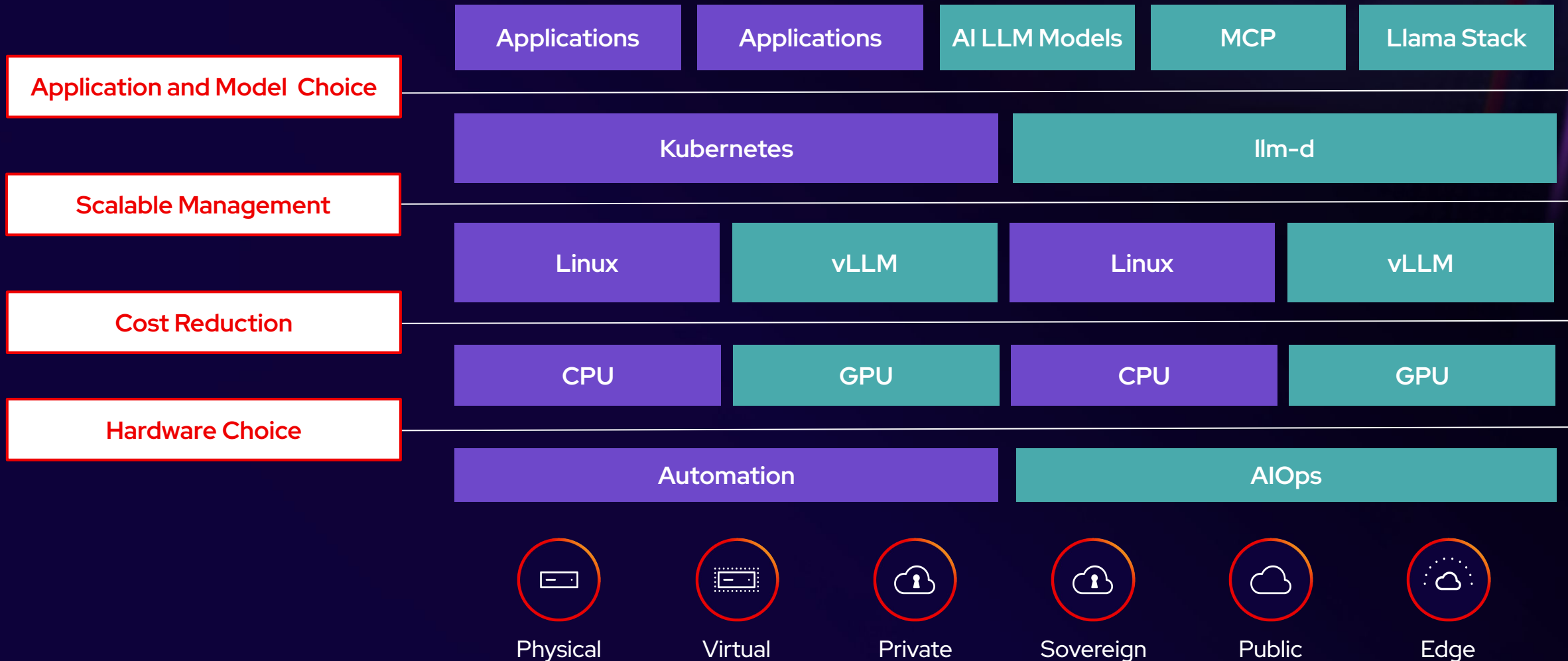
AI
Platform

Open Hybrid Cloud enabled Cost Reduction, Choice, and Flexibility



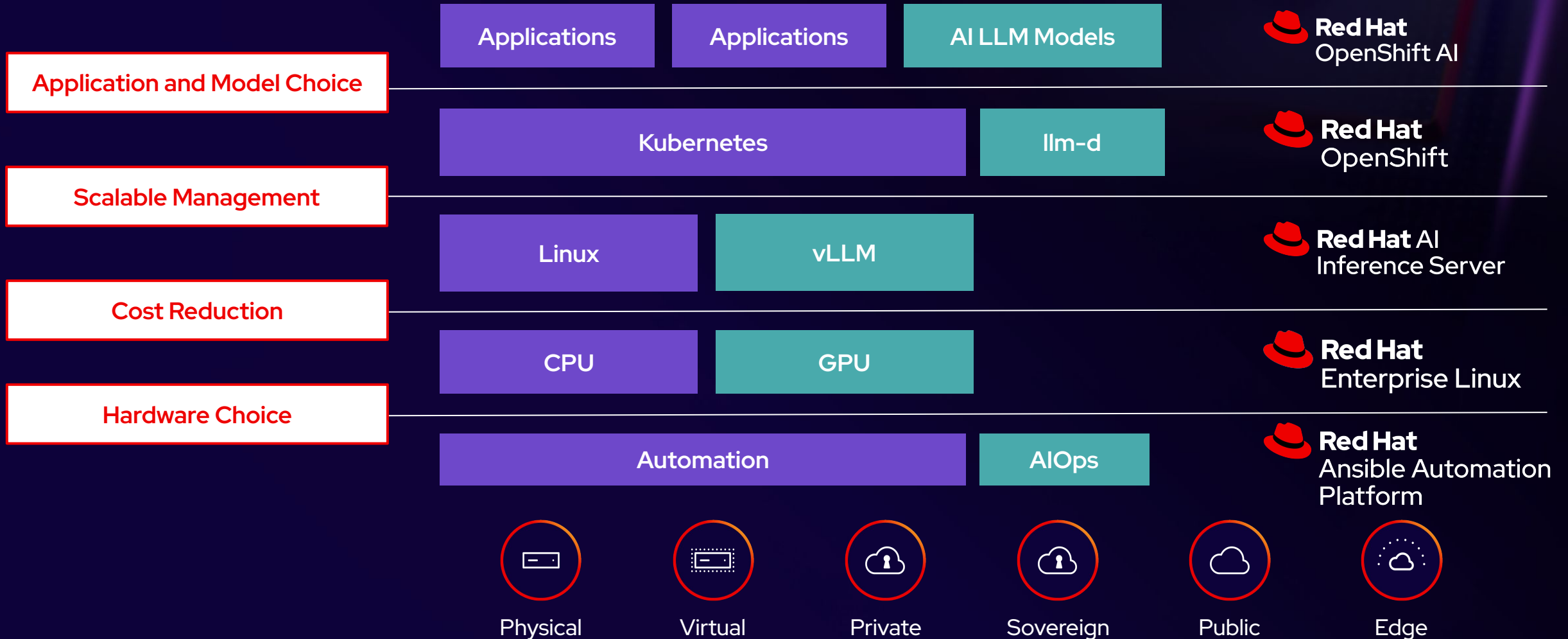
Open Hybrid Cloud + AI

enables Cost Reduction, Choice, and Flexibility



Red Hat and Red Hat AI

Open, Agentic, Enterprise-Ready



Red Hat AI

Get started quickly

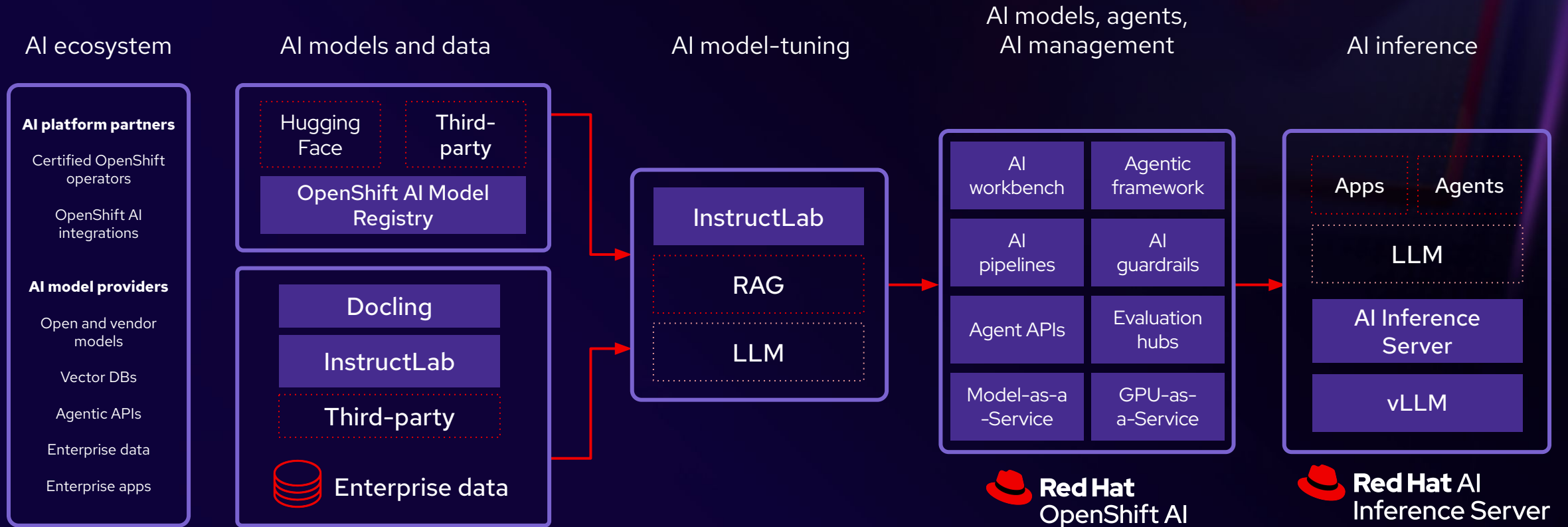


 **Red Hat**
Enterprise Linux AI

 **Red Hat AI**
Inference Server

Red Hat AI

Open, Agentic, Enterprise-Ready



LlamaStack + Model Context Protocol + Agentic AI

Red Hat OpenShift AI + OpenShift

Open Hybrid Cloud + AI enables successful Technology Era transition



Red Hat AI

Accelerate the development and delivery
of AI solutions across hybrid cloud environments



Red Hat Open Hybrid Cloud



Connect

Thank you