

# The Future of Datacenters requires Automated Modern IT & Edge Architecture

Gaining control of your data with efficient, flexible, and future-ready solutions

**Luigi De Meo**

*Presales Principal Solutions Architect*

November 12<sup>nd</sup>, 2025



# What's top of mind for your CIO is top of mind for us

Customers are prioritizing three strategic initiatives for their storage environments.



## Modern DC, Edge and Multicloud

91%

Face challenges building a multicloud strategy to support innovation<sup>1</sup>



## Artificial Intelligence and Generative AI

75%

say AI/GenAI is a key part of their organization's business strategy<sup>2</sup>



## Cybersecurity and data resilience

89%

say security is a key part of their organization's business strategy<sup>2</sup>

89%

of organizations say usage/evaluation of multiple hypervisor options is a strategic imperative<sup>3</sup>

Which requires a strategic partner to move forward

<sup>1</sup> Innovation Catalysts, Dell Technologies, February 2024

<sup>2</sup> Source: Dell Technologies survey across 750 business and IT decision makers across US, UK, DE, FR and JP, all segments, Feb 2025.

<sup>3</sup> Source: Enterprise Strategy Group Complete Survey Results, Navigating the Cloud and AI Revolution: The State of Enterprise Storage and HCI, February 2024.

# What we're hearing from customers

Top requests

"I can't easily **repurpose my environment** for new software without buying new hardware."

”

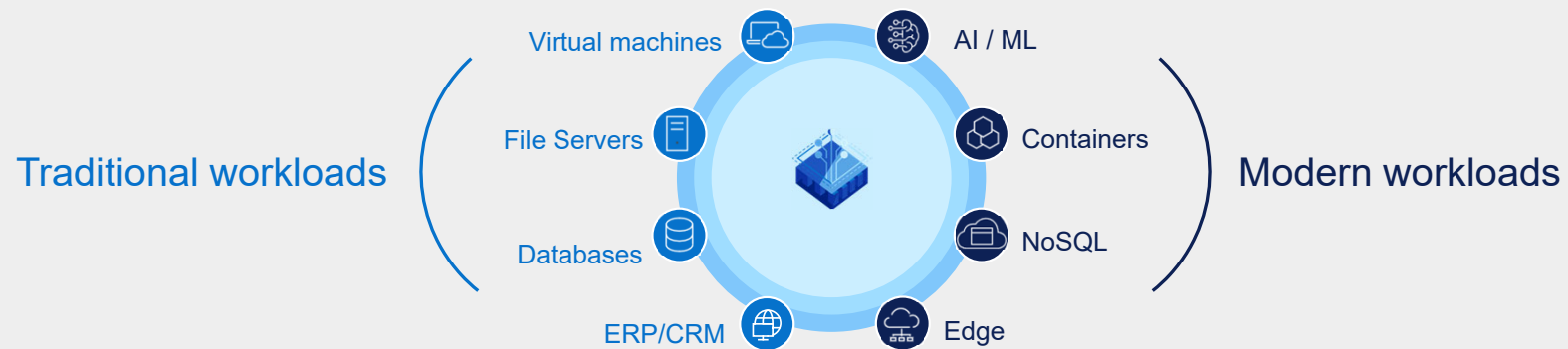
"Working with multiple vendors for my hardware is **way too complex**, and we never know who to call for what support issues"

"My staff doesn't have the **skill set** yet to transition software provides without impacting operations."

“

"We need a way to be **cost efficient** while still preparing for the future."

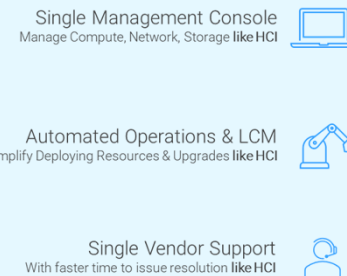
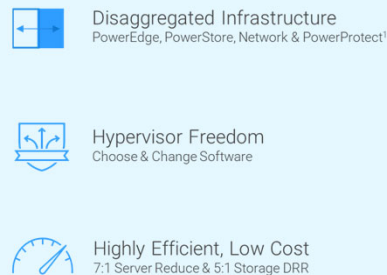
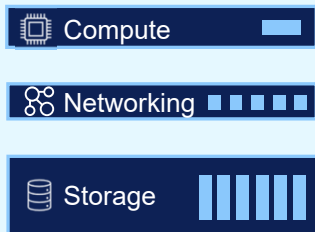
# Take a disaggregated approach to support evolving workload mix



3-Tier  
Flexible

Disaggregated & Dell Private Cloud  
Simple and Flexible

Hyperconverged  
Simple



## Disaggregated + Dell Private Cloud:

The best of Both options

The background of the slide features a large, stylized gear. The gear is composed of a dark blue outer ring and a lighter blue inner ring. The teeth of the gear are white. The background is a dark blue field with a pattern of small, light blue diagonal lines. The text is centered within the gear.

# **Dell Automation Platform**

We automate so you can innovate

Velocity

Simplicity

Assurance

# Dell Automation Platform Architecture

Platform Portal

Infrastructure Inventory

Catalog of Blueprints

Available  
Prem or SaaS

Orchestrator

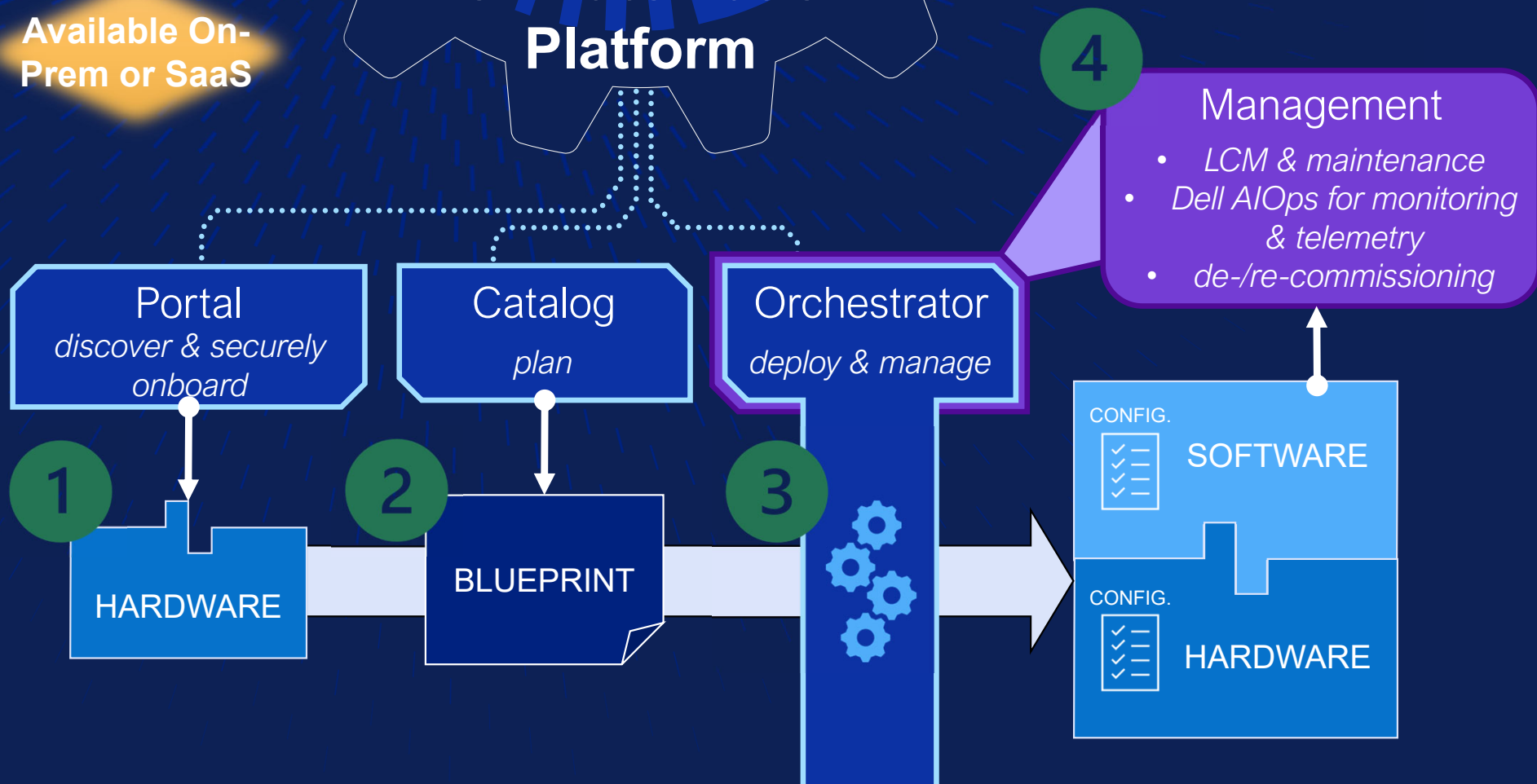
Selected Infrastructure + Private Cloud blueprint

Execute  
Ops. Tasks



Available On-  
Prem or SaaS

# Dell Automation Platform



1 Select infra.  
from inventory

2 Download validated blueprint  
from catalog to orchestrator

3 Run blueprint to install/update  
software or configurations

4 Centralized day 2  
operations for assets

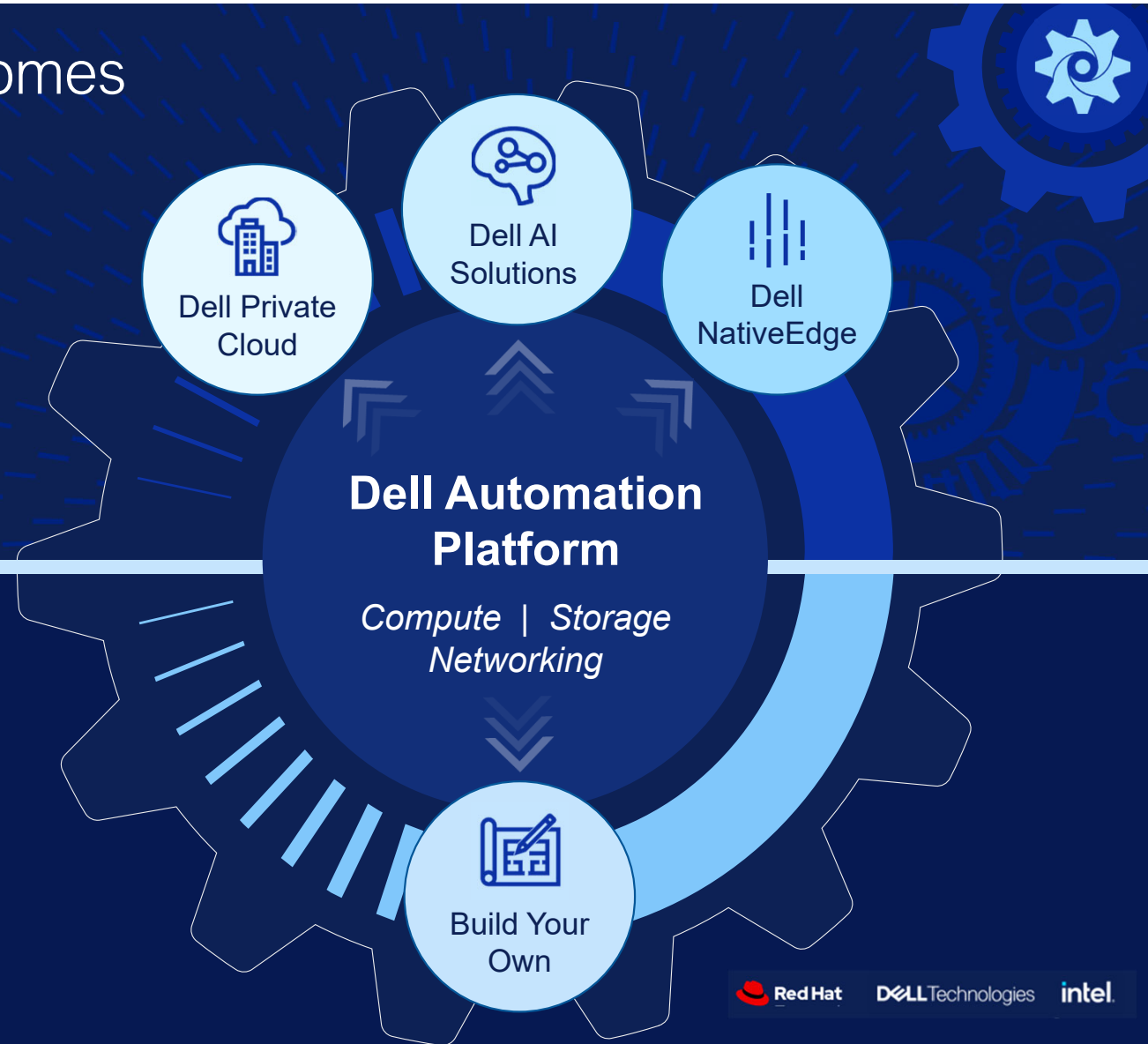
# Enabling you across outcomes

## Curated and Validated

Deploy and manage outcomes on your Dell infrastructure, tested and validated by Dell's experts

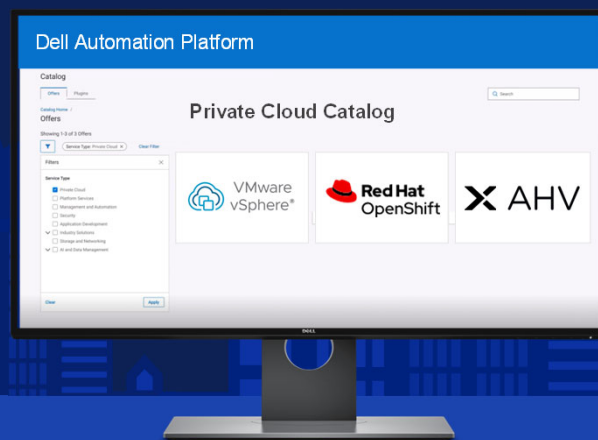
## Customizable and Flexible

Build on validated blueprints or start from scratch using open source tools and software on orchestrated infrastructure



# Introducing Dell Private Cloud

Freedom and flexibility to evolve on your terms



Dell Automation Platform



Compute

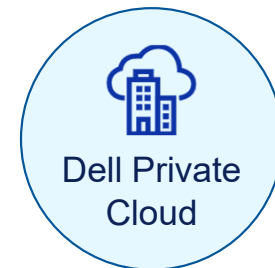


Networking



Storage

## Fully transferable and reusable hardware



- Protect investments with disaggregated and adaptable infrastructure
- Bring your own cloud OS licenses for ultimate flexibility
- Simplify operations with full lifecycle management and automated integration with Dell PowerStore (additional storage H2 2025)
- Ensure continuity by leveraging existing skills and access to familiar tools
- Rely on Dell as the primary source of system-level support for hardware and system software

Validated with

55,000+  
hours of testing<sup>1</sup>

Over

90%  
fewer steps to provision vs.  
manual deployment<sup>2</sup>

Workload-ready clusters in

2.5  
hours, **zero** manual effort<sup>3</sup>

<sup>1</sup> Based on internal Dell testing. Dell Private Cloud deploying VMware vSphere and Red Hat. August 2025. Actual results may vary. CLM-014261.

<sup>2</sup> Based on internal Dell testing. Manual steps automated through a single Dell Private Cloud blueprint. May 2025. Actual results may vary. CLM-014260.

<sup>3</sup> Based on internal Dell testing. After hardware installation, configuration and platform onboarding. No manual interaction required after initiation. Actual results may vary. CLM-014262.

<sup>4</sup> Additional storage support coming 2H 2025.

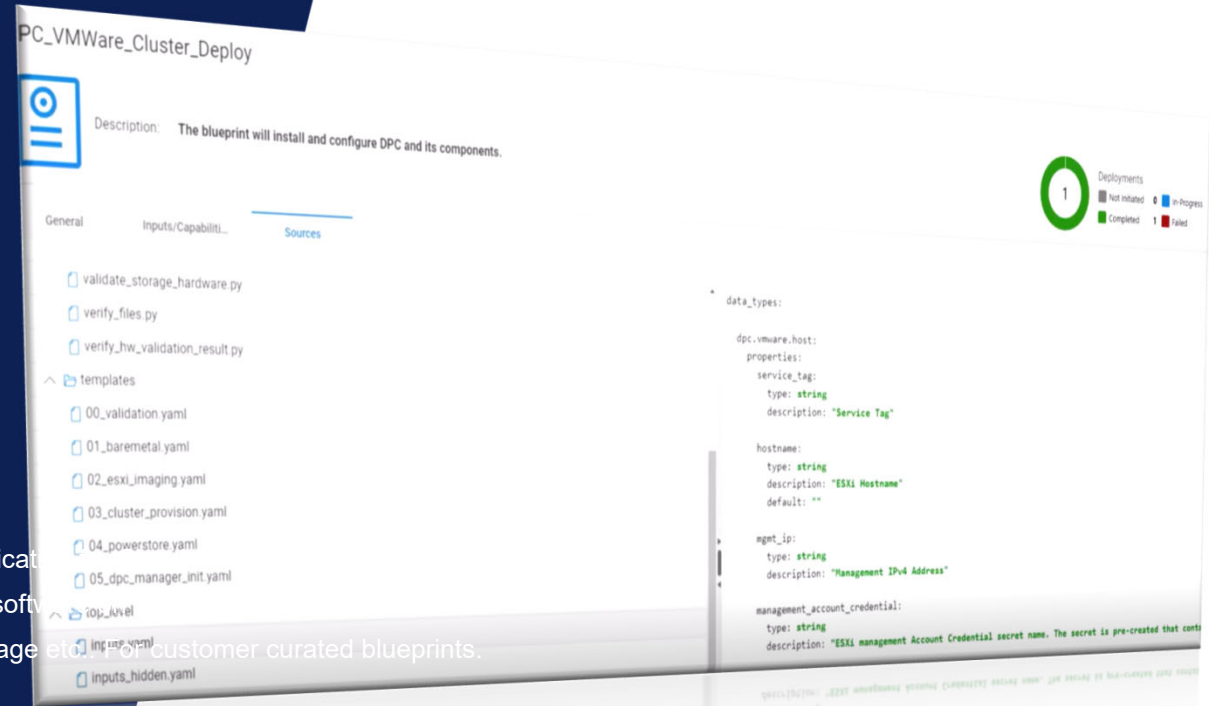
# What is a blueprint?

A build scheme to perform complex IT infrastructure operations

- Defines resources and their connections between each other
- Declarative statements to execute configuration operation based on user-provided inputs
- Output is a sequence of steps that can be automated to complete a complex operation

## Building a blueprint

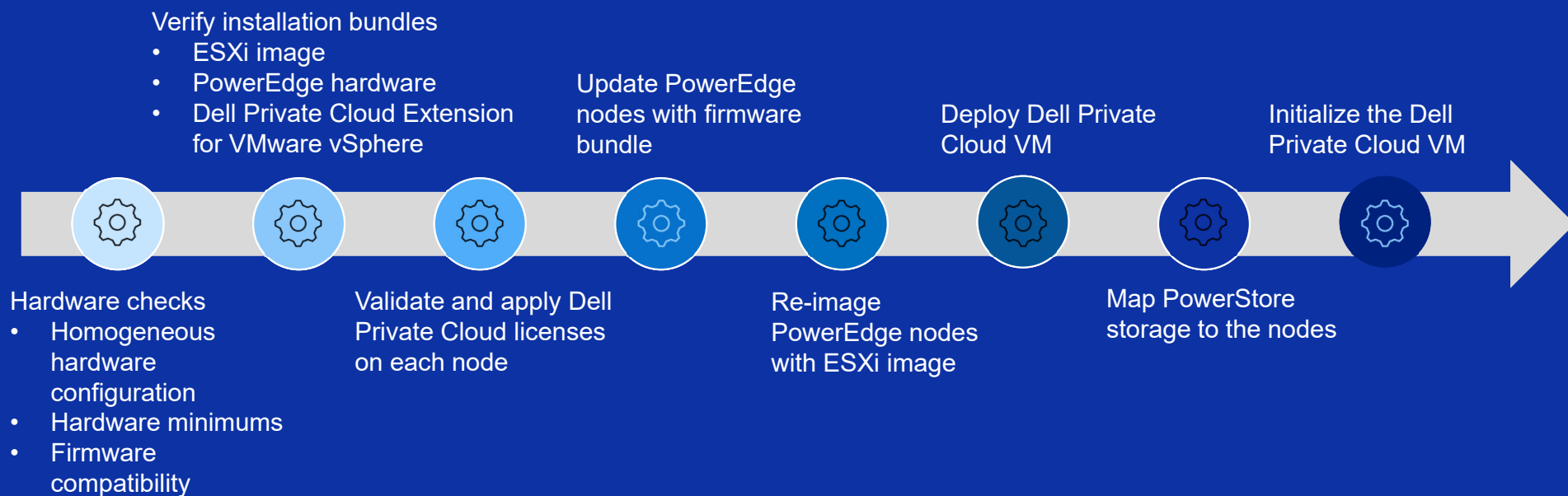
- A YAML file written in Topology and Orchestration Specification
- Dell tests and validates blueprints to support third-party software
- Use third party IAC tooling I.E. Ansible/Terraform/Backstage etc. For customer curated blueprints.



VMware blueprints for Dell Private Cloud including:

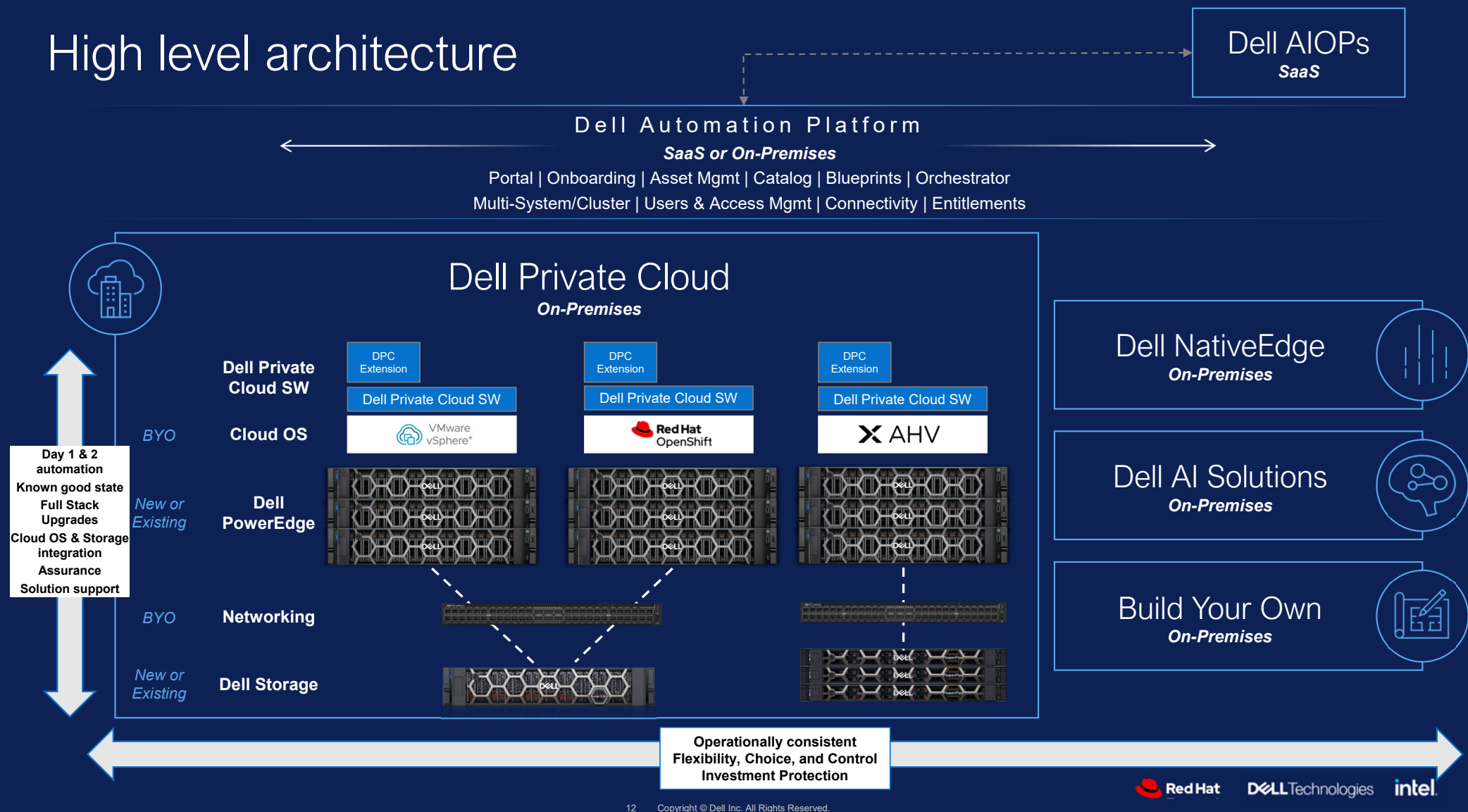
- Cluster deploy
- Cluster expansion
- PowerStore update

# What the cluster deploy blueprint automates



Note: not all tasks are captured on this slide

# High level architecture



# Dell PowerEdge Powered by Intel Xeon

Purpose-built | Intelligent | Cyber resilient

XR-Series

R-Series

M-Series

XE-Series

T-Series



# Dell PowerStore

All-Flash Storage

## Future-Proof

- ✓ Scale-up/Scale-out flexibility
- ✓ Built-in data resiliency
- ✓ Lifecycle Extension with ProSupport – “Never outgrow”

## Efficient

- ✓ Industry-best 5:1 data reduction guarantee
- ✓ Autonomous active/active
- ✓ Energy efficient design

## Easy to use

- ✓ Self-optimizing platform
- ✓ Powerful AIOps tools
- ✓ End-to-end ecosystem automations



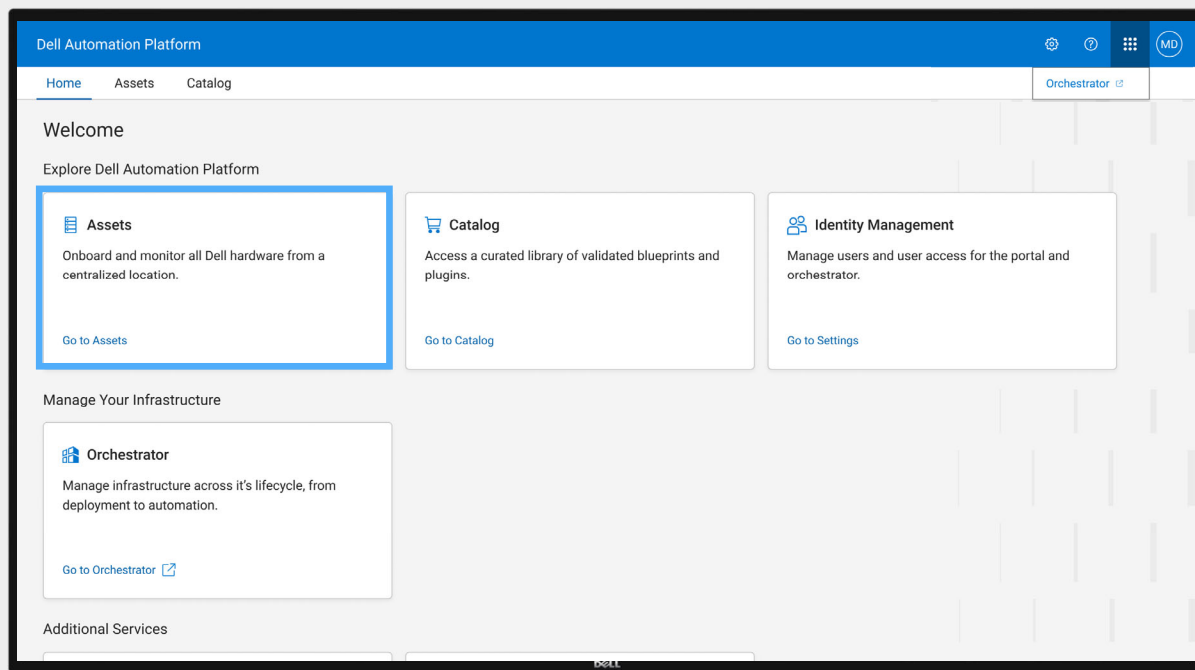
# User Experience Example

# Central portal



## Everything you need, all in one location

- Available via secure SaaS or a customer-hosted cluster on-premises
- Quick access to Dell Automation Platform services and capabilities
- Manage, monitor, and operate across cloud, on-premises, and edge





ONBOARD

PROVISION

MANAGE

DECOMMISSION

REPURPOSE

Securely onboard compute and storage into Dell Automation Platform inventory with zero touch, automated processes

Disaggregated infrastructure for flexible provisioning



Dell Compute



Dell Storage

DELL PRIVATE CLOUD

DELL Technologies

ONBOARD



PROVISION

MANAGE

DECOMMISSION

REPURPOSE

Day 1: Choose your preferred software from Dell's curated catalog of validated blueprints

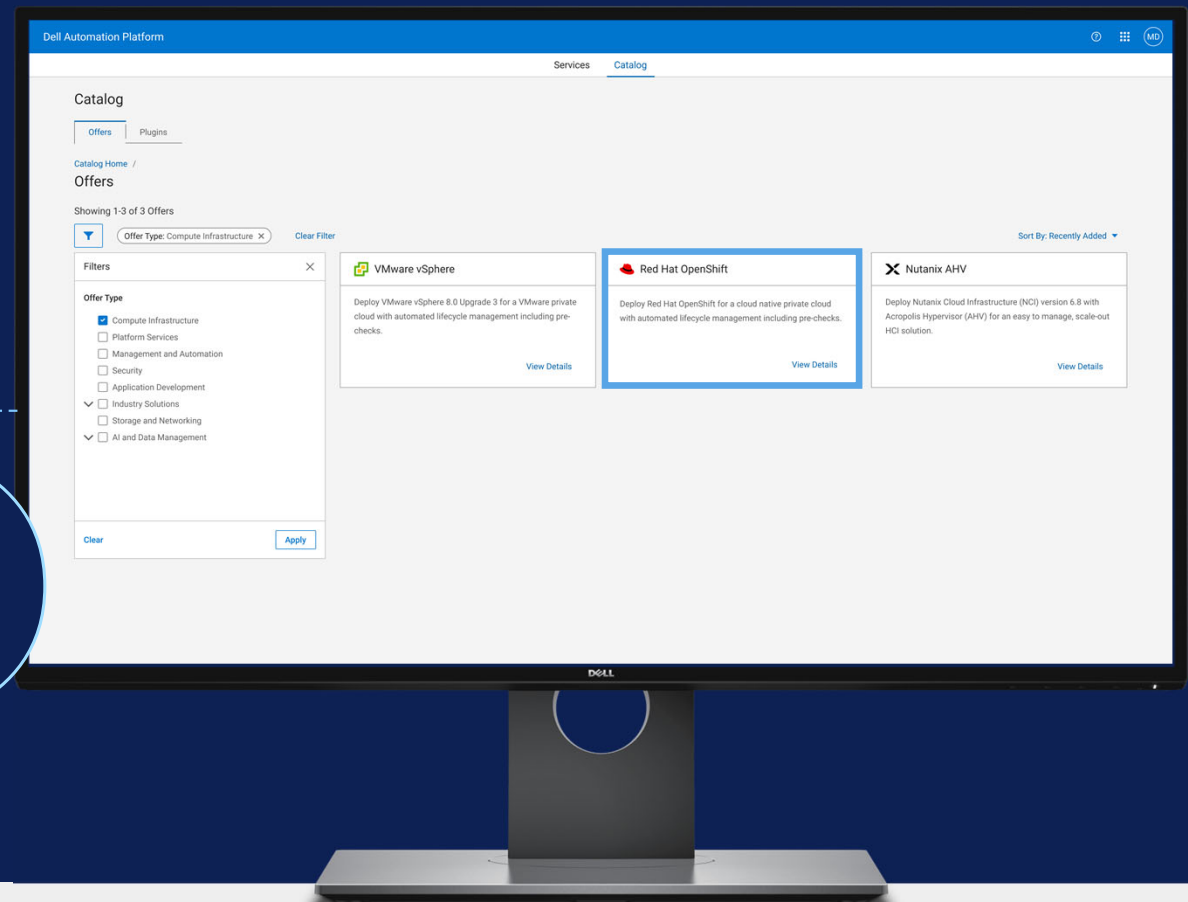


Dell  
Compute



Dell  
Storage

DELL PRIVATE CLOUD



DELL Technologies

ONBOARD



PROVISION

MANAGE

DECOMMISSION

REPURPOSE

Step 2: Choose your available nodes from the pool

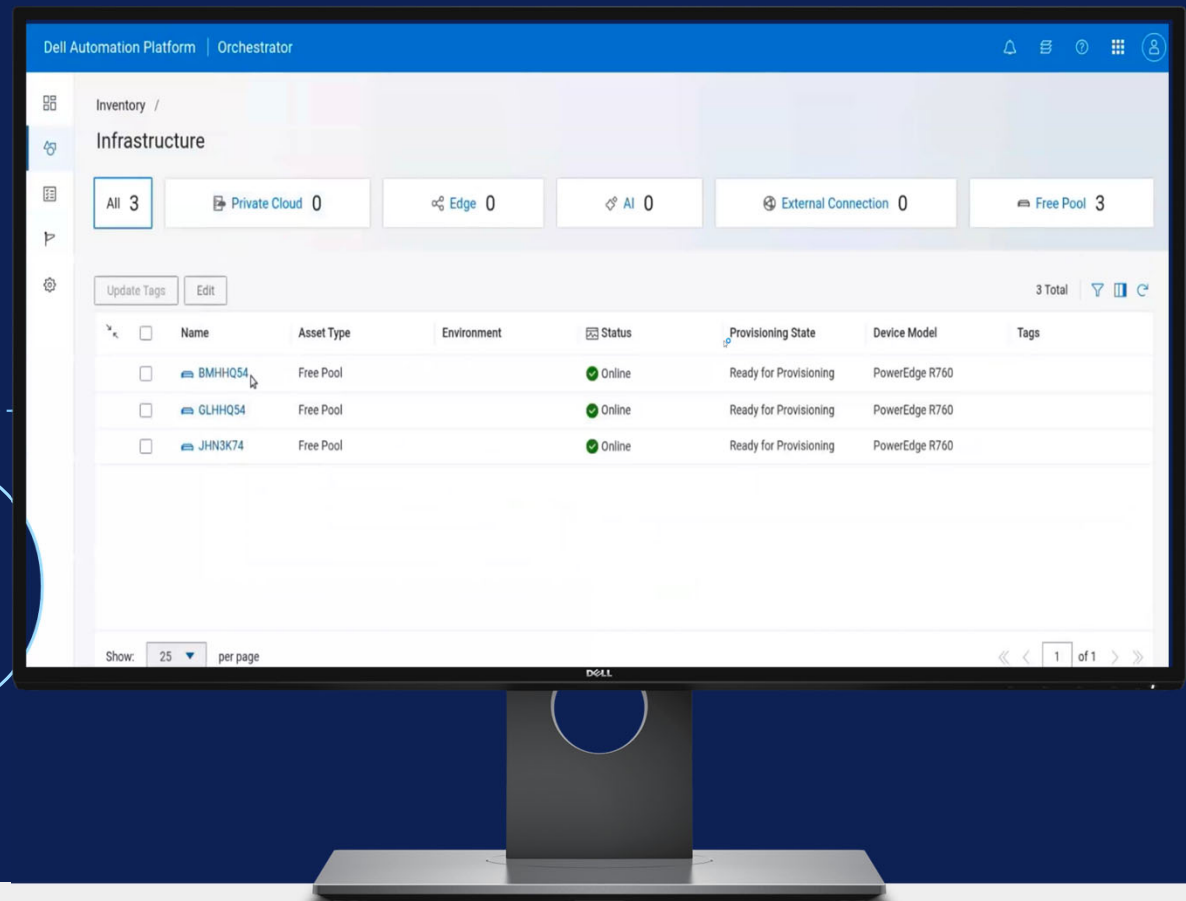


Dell  
Compute



Dell  
Storage

DELL PRIVATE CLOUD



DELL Technologies

ONBOARD



PROVISION

MANAGE

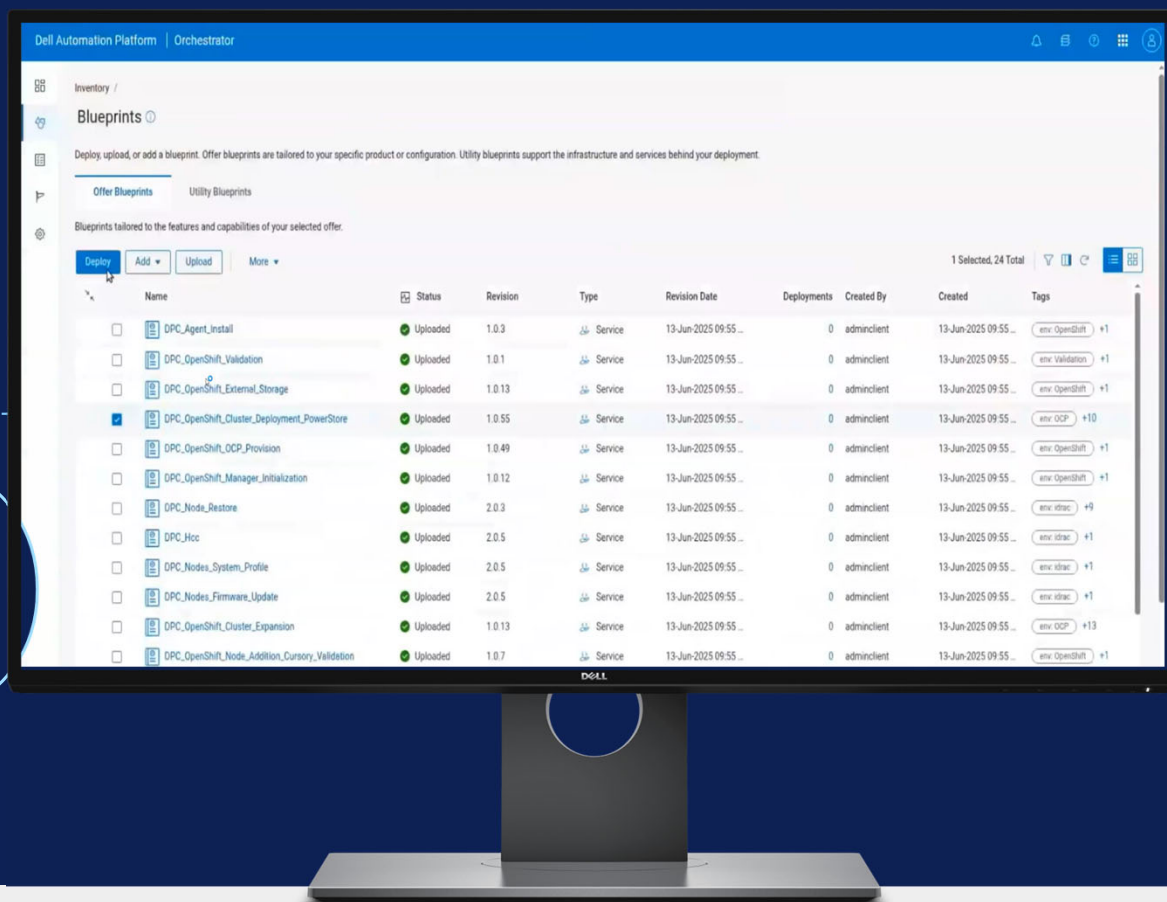
DECOMMISSION

REPURPOSE

## Step 3: Deploy blueprint

Dell  
ComputeDell  
Storage

DELL PRIVATE CLOUD



DELL Technologies



ONBOARD

**PROVISION**

MANAGE

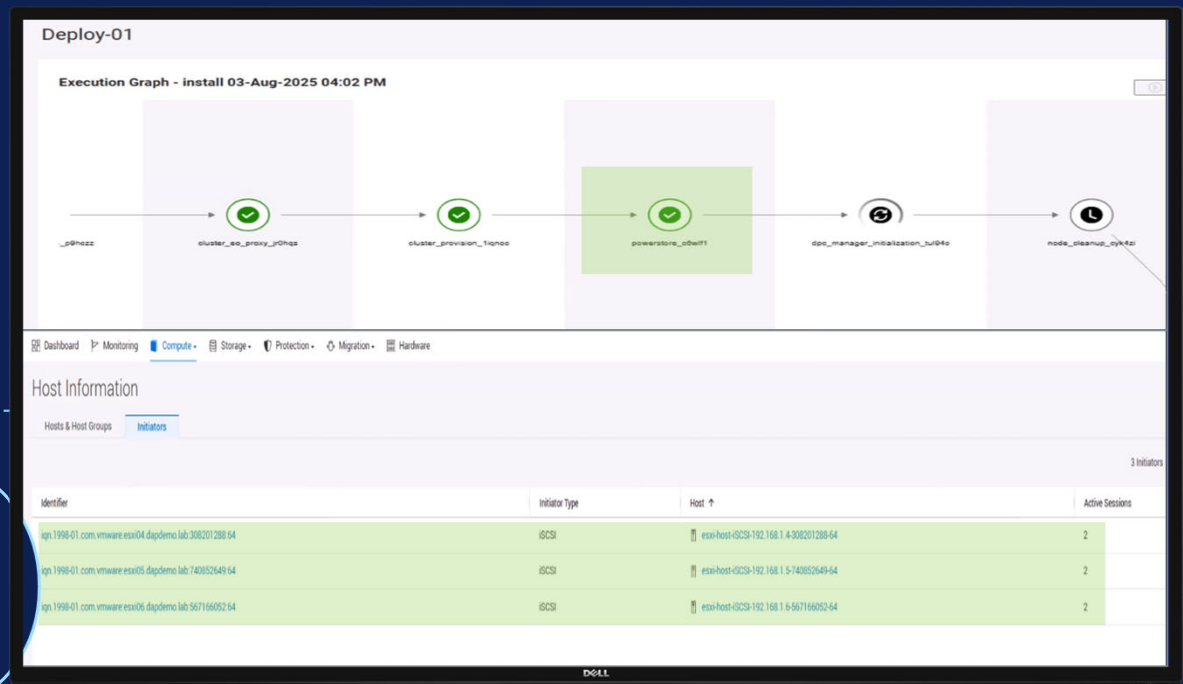
DECOMMISSION

REPURPOSE

## Step 4b: Host Mapping with Storage Integrated platform (PowerStore)

Dell  
ComputeDell  
Storage

DELL PRIVATE CLOUD



Dell Private Cloud can perform host mapping and unmapping for PowerStore volumes which also benefits cluster expansion and cluster node removal blueprint operations.

For other Dell storage products, the blueprint deployment gracefully stops at this step so that the user can manually map the hosts to the volume. Once completed, user can resume the blueprint deployment.

ONBOARD



PROVISION

MANAGE

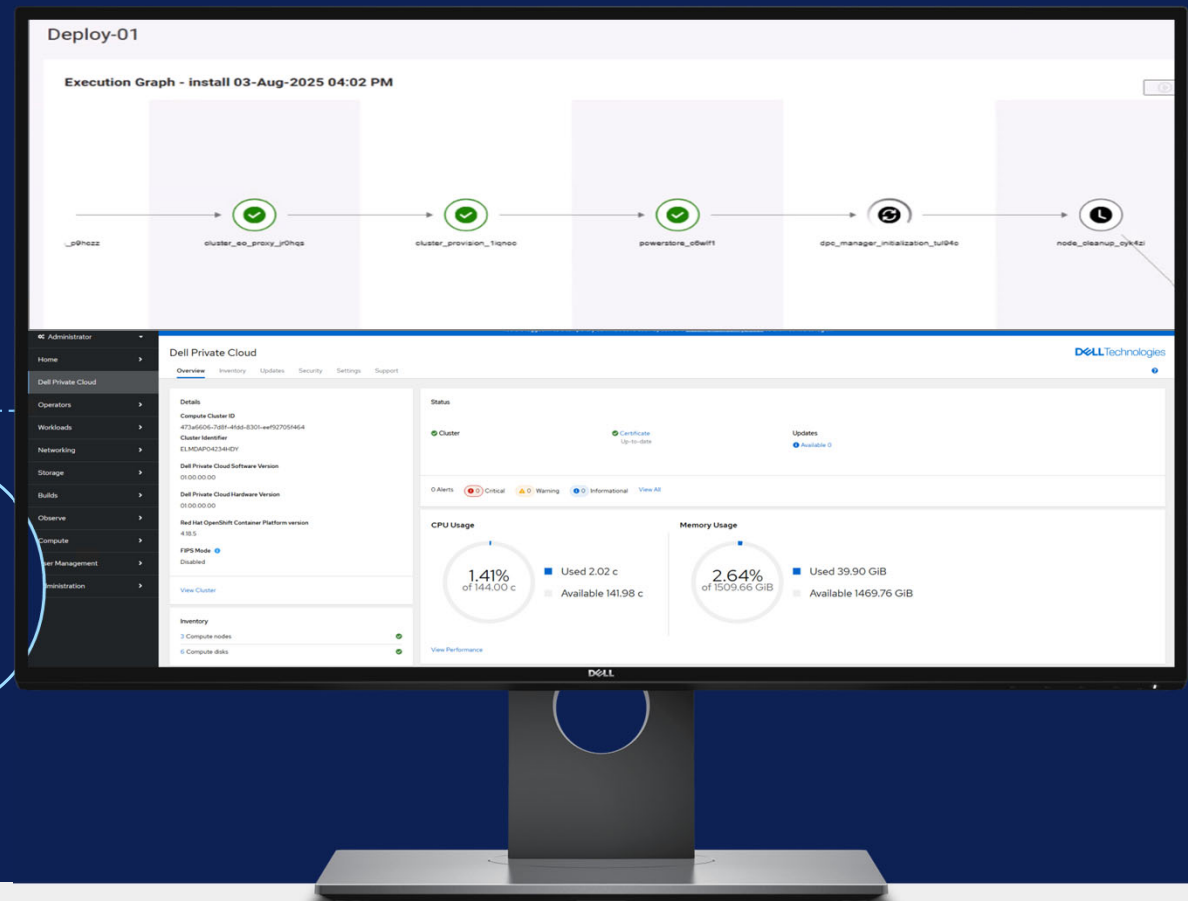
DECOMMISSION

REPURPOSE

Step 4c: Deploying the extension resources to the OpenShift cluster



DELL PRIVATE CLOUD



ONBOARD

**PROVISION**

MANAGE

DECOMMISSION

REPURPOSE

## Step 5: Confirm node state

**Dell  
Compute****Dell  
Storage****DELL PRIVATE CLOUD**

Dell Automation Platform | Orchestrator

Inventory / Infrastructure

All 8 Private Cloud 2 Edge 1 Storage 1 AI 0 External Connection 1 Free Pool 3

Update Tags Edit

Name	Asset Type	Environment	Status	Provisioning State	Device Model	Version	Tags
> ymw-dpvm.dapdemo.lab	Private Cloud	VMware	Online	Provisioned		8.0.3-24853646	
vCenter 112	External Connection	vCenter	Connected			8.0.3	
> rh-cluster1.dapdemo.lab	Private Cloud	Red Hat Openshift	Disconnected	Provisioned		4.18.5	
GOPTX74	Private Cloud	Red Hat Openshift	Online	Provisioned	PowerEdge R660		
FOP7X74	Private Cloud	Red Hat Openshift	Online	Provisioned	PowerEdge R660		
DZK7X74	Private Cloud	Red Hat Openshift	Online	Provisioned	PowerEdge R660		
PowerStore-01	Storage	PowerStore	Connected			4.1.0.1	
HOP7X74	Free Pool		Online	Ready for Provisioning	PowerEdge R660		
DOP7X74	Free Pool		Online	Ready for Provisioning	PowerEdge R660		
1600003	Free Pool		Online	Ready for Provisioning	PowerEdge R660		
15VQ664	Edge	NativeEdge	Online	Provisioned	PowerEdge R660	3.2.0.0	

ONBOARD



PROVISION

MANAGE

DECOMMISSION

REPURPOSE

## Step 6: Login to web console

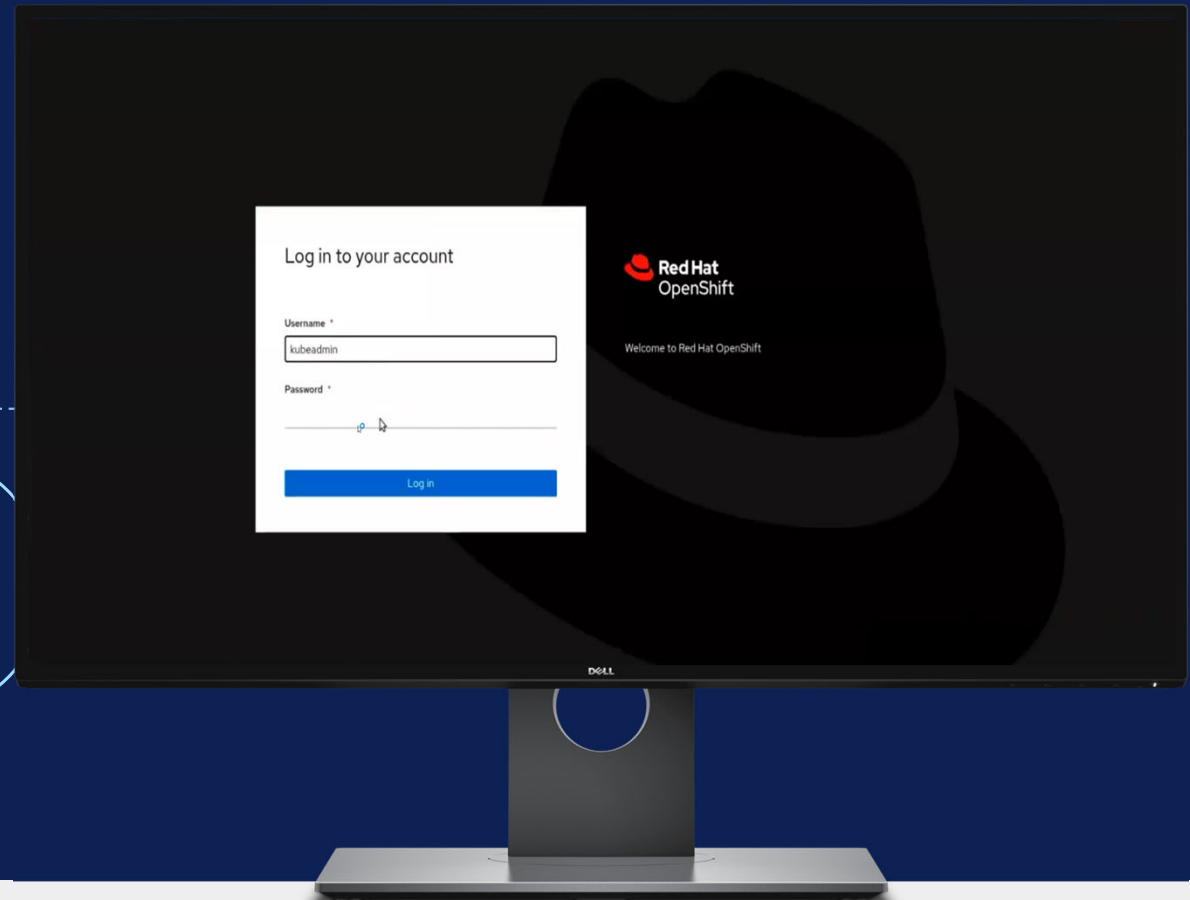


Dell  
Compute



Dell  
Storage

DELL PRIVATE CLOUD



DELL Technologies

ONBOARD

PROVISION



MANAGE

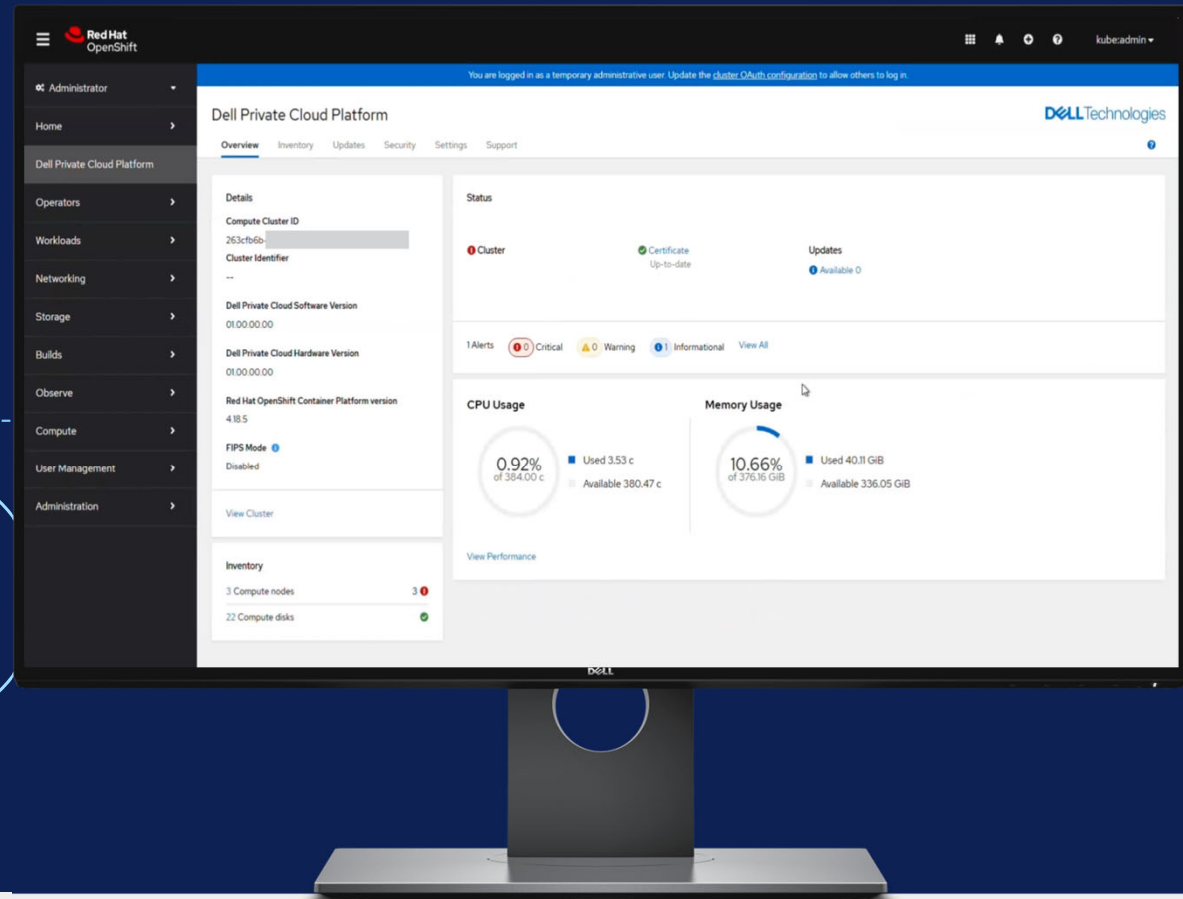
DECOMMISSION

REPURPOSE

Day 2: Manage and update your private cloud infrastructure with third-party extensions



DELL PRIVATE CLOUD



DELLTechnologies

ONBOARD

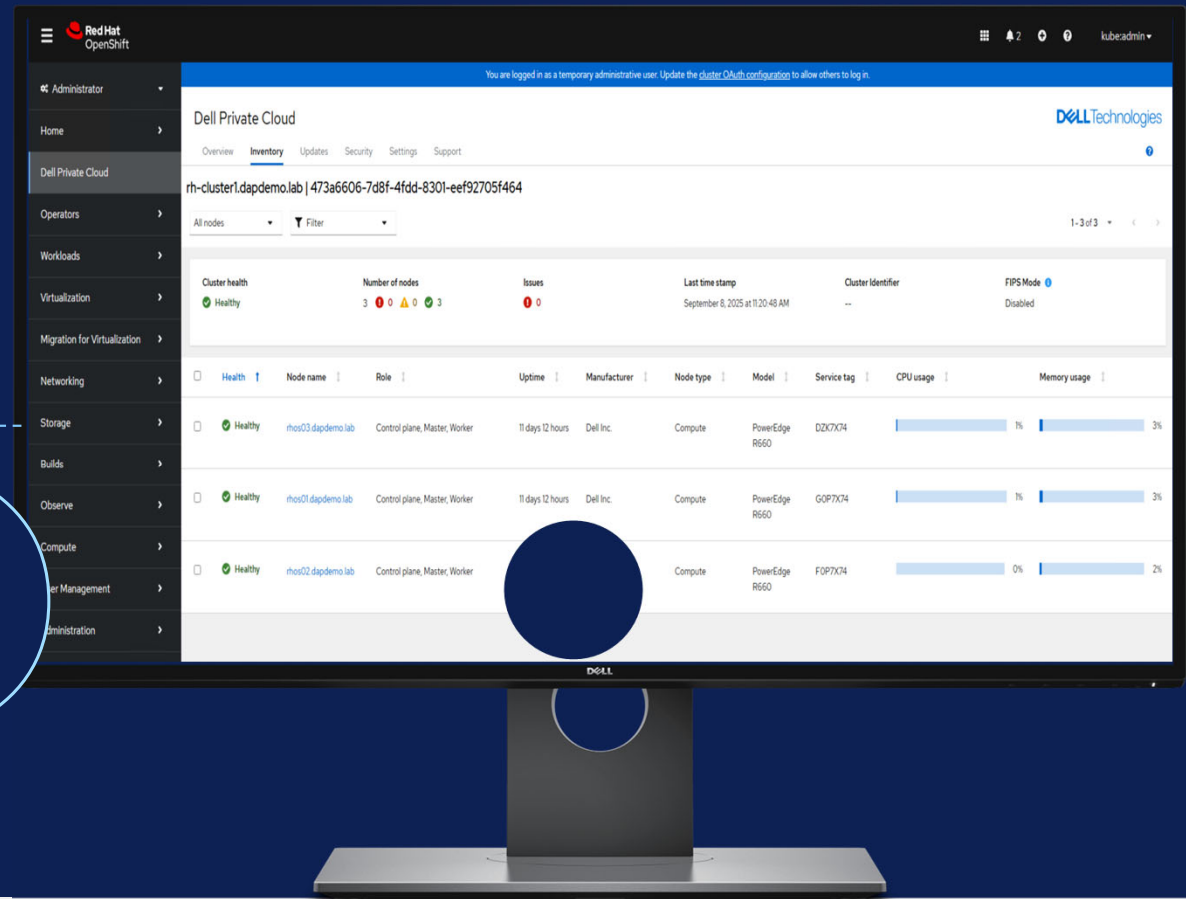
PROVISION

**MANAGE**

DECOMMISSION

REPURPOSE

## Day 2: Red Hat Cluster View

**Dell  
Compute****Dell  
Storage****DELL PRIVATE CLOUD**

ONBOARD

PROVISION



MANAGE

DECOMMISSION

REPURPOSE

## Day 2: Red Hat Node View

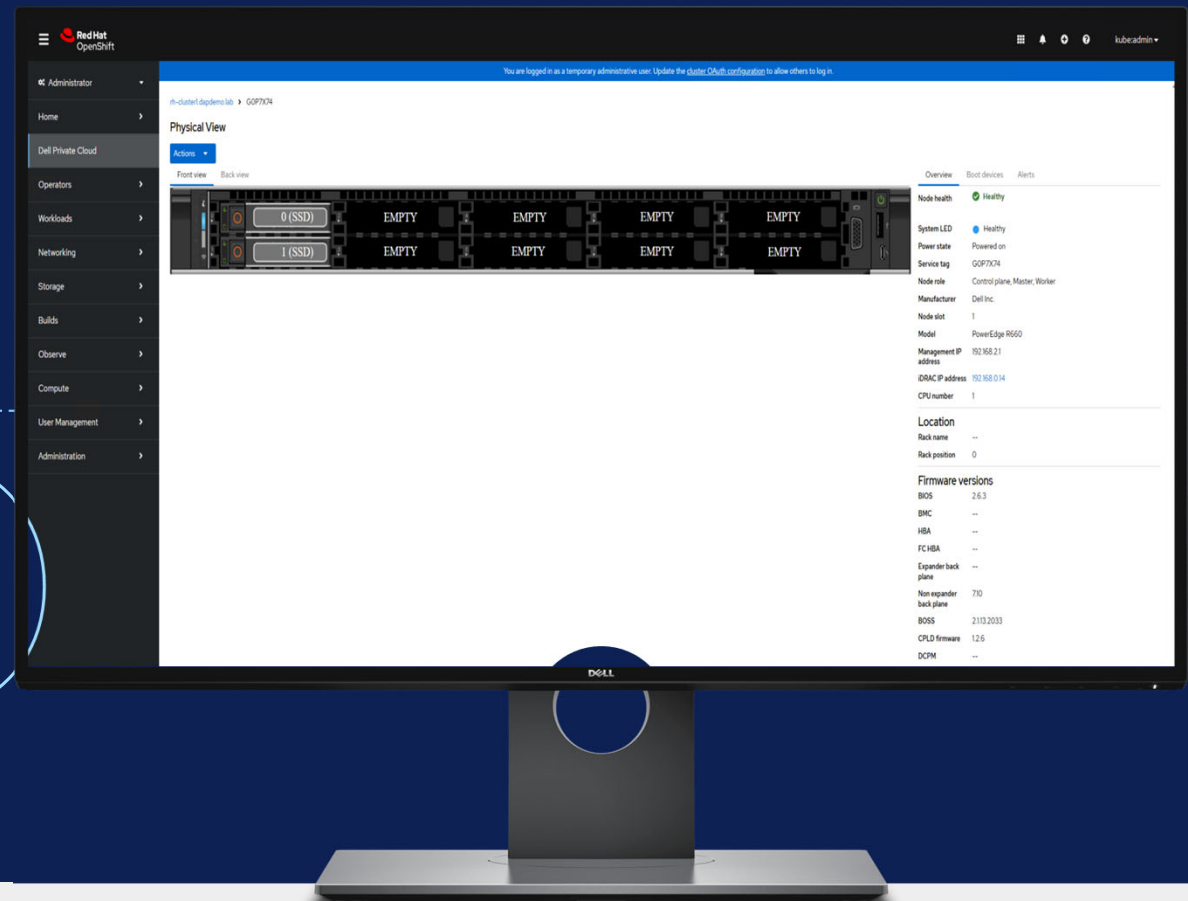


Dell  
Compute



Dell  
Storage

DELL PRIVATE CLOUD



DELL Technologies

Decommission and return infrastructure resources to inventory for repurposing to a different software option



Dell  
Compute



## Dell Storage

DELL PRIVATE CLOUD

The screenshot displays the Dell Fleet Management web interface. The top navigation bar includes the URL "dsp.dell.com/dell-fleet-management". Below it, the "Inventory" section is active, showing a list of hardware assets under the filter "View Infrastructure". A summary indicates "11 Total" items.

Type	Name	Health State	Provisioning	Model	CPU Utilization	Memory Utilization	Storage Utilization	Tags
Power Edge R760XA-Control Plane		Healthy	Ready for Provision	8x Dell Power Edge R760XA	0.0%	0.0%	0.0%	AI
Power Edge R760XA-Control Plane		Healthy	Ready for Provision	8x Dell Power Edge R760XA	0.0%	0.0%	0.0%	AI
Power Edge R760XA-Control Plane		Healthy	Ready for Provision	8x Dell Power Edge R760XA	0.0%	0.0%	0.0%	AI
Power Edge XE9680 Worker		Healthy	Ready for Provision	8x Dell Power Edge R760XA	0.0%	0.0%	0.0%	AI
Power Edge XE9680 Worker		Healthy	Ready for Provision	8x Dell Power Edge R760XA	0.0%	0.0%	0.0%	AI
Power Edge XE9680 Worker		Healthy	Ready for Provision	8x Dell Power Edge R760XA	0.0%	0.0%	0.0%	AI
Power Edge XE9680 Worker		Healthy	Ready for Provision	8x Dell Power Edge R760XA	0.0%	0.0%	0.0%	AI
Power Edge XE9680 Worker		Healthy	Ready for Provision	8x Dell Power Edge R760XA	0.0%	0.0%	0.0%	AI
Power Edge XE9680 Worker		Healthy	Ready for Provision	8x Dell Power Edge R760XA	0.0%	0.0%	0.0%	AI
Power S 180-Work		Healthy	Ready for Provision	8x Dell Power Edge R760XA	0.0%	0.0%	0.0%	AI
Power S 180-Work		Healthy	Ready for Provision	8x Dell Power Edge R760XA	0.0%	0.0%	0.0%	AI
Power S 180-Work		Healthy	Ready for Provision	8x Dell Power Edge R760XA	0.0%	0.0%	0.0%	AI
Power S 180-Work		Healthy	Ready for Provision	8x Dell Power Edge R760XA	0.0%	0.0%	0.0%	AI
Power S 180-Work		Healthy	Ready for Provision	8x Dell Power Edge R760XA	0.0%	0.0%	0.0%	AI
Power S 180-Work		Healthy	Ready for Provision	8x Dell Power Edge R760XA	0.0%	0.0%	0.0%	AI
Power Edge XE9680 Worker		Healthy	Ready for Provision	8x Dell Power Edge R760XA	0.0%	0.0%	0.0%	AI

A large white overlay box is positioned over the bottom half of the table. Inside the box, the text "Ready-to-Provision" is written in a large, bold font, followed by "PowerEdge compute" in a slightly smaller font. Below this text, there are two stylized hexagonal patterns. The left pattern contains the word "DELL" in a bold, sans-serif font. The right pattern contains the words "PowerEdge" in a similar font. The entire overlay is semi-transparent, allowing some details of the table rows to remain visible underneath.

ONBOARD

PROVISION

MANAGE

DECOMMISSION

 **REPURPOSE**

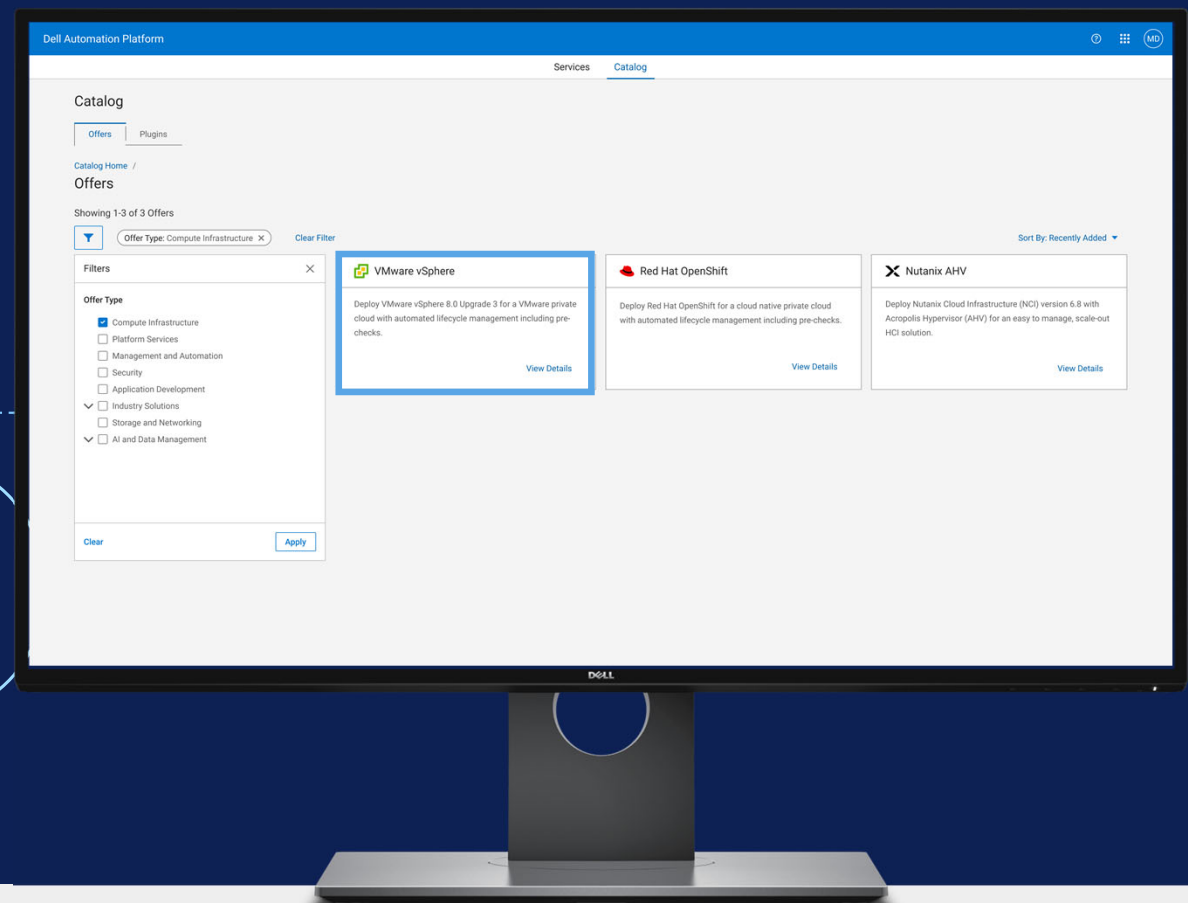
Reprovision to a different  
private cloud software  
ecosystem of your choice

**vmware®**  
by **Broadcom**

  
**Dell  
Compute**

  
**Dell  
Storage**

**DELL PRIVATE CLOUD**



**DELL**Technologies

# Licensing overview



## Dell Automation Platform

### **Platform License**

Platform No-cost subscription added to sales order



## Dell Private Cloud

### **Private Cloud Software**

1-,3-,4-,5- year subscription, licensed per PowerEdge node  
Licenses are portable between Private Clouds and hardware generations



## Disaggregated Infrastructure

### **Dell PowerEdge**

Requires iDRAC Enterprise or Datacenter license per node

### **Dell Storage**

Use standard storage licensing (e.g. PowerStore, PowerFlex)  
No additional Private Cloud licenses required



*Bring your own licensing*

### **vSphere Cluster**

Any ELA, VCSP, Omnisia bundle, or perpetual license, VVF and VCF\*  
subscription (vSphere Enterprise Plus minimum)

### **vCenter Server**

Customer-managed vCenter with licensing



*Bring your own subscription*

### **OpenShift Cluster**

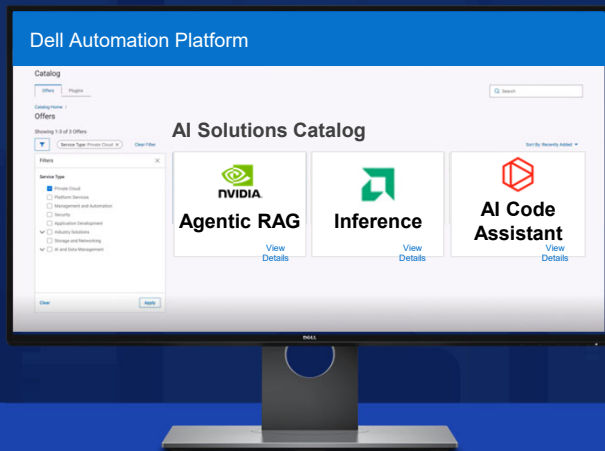
OpenShift Container Platform Plus, OpenShift Container Platform, OpenShift  
Kubernetes Engine (OKE), OpenShift Virtualization Engine (OVE)

### **OpenShift Add On Subscriptions (optional)**

Advanced Cluster Management for Kubernetes (ACM) for OKE, ACM for  
OVE, AI Accelerator, Red Hat OpenShift AI, Ansible

# Dell AI Factory

## Simplify deployment of AI Solutions



Dell Automation Platform



Compute



Networking



Storage

Faster time to value, lower risk

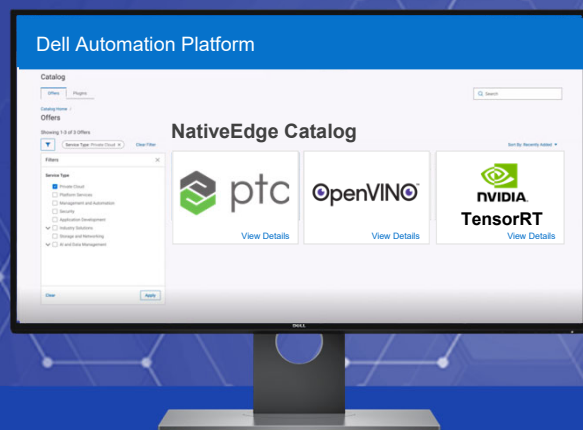
- A **catalog of optimized solutions** from Dell and our network of partners
- **Simplify** AI deployments with validated and optimized configurations for your system
- **Automated deployment** of AI solutions reduces time, effort, and mistakes
- **Optimized hardware** with GPU accelerated compute
- **Accelerate AI outcomes** from strategy to scalable operations with Dell Services

# Dell NativeEdge

Accelerate AI innovation@edge



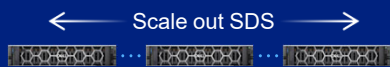
Edge operations, unified.



Dell Automation Platform

NativeEdge OS  
HA CLUSTERS

3<sup>RD</sup> PARTY &  
BROWNFIELD



- **Centralize management** of diverse devices and edge AI applications
- **Free up time** with automation from Day 0 to Day 2 ops and beyond
- **Choose** any application, IoT framework, OT systems, or multicloud
- **Deploy** VM and container applications to existing environments
- **Design and modernize** your edge operations with Dell Services experts

68%

time savings with automation<sup>1</sup>

1-click

cluster expansion<sup>1</sup>

60-sec

application deployment<sup>1</sup>

<sup>1</sup>Enterprise Strategy Group by TechTarget Technical Validation commissioned by Dell Technologies, "Dell NativeEdge - Edge Operations Software Platform," February 2025.

# Customizable and Flexible

Customize validated blueprints to fit your needs or build your own to orchestrate your preferred software



Prometheus



kubernetes

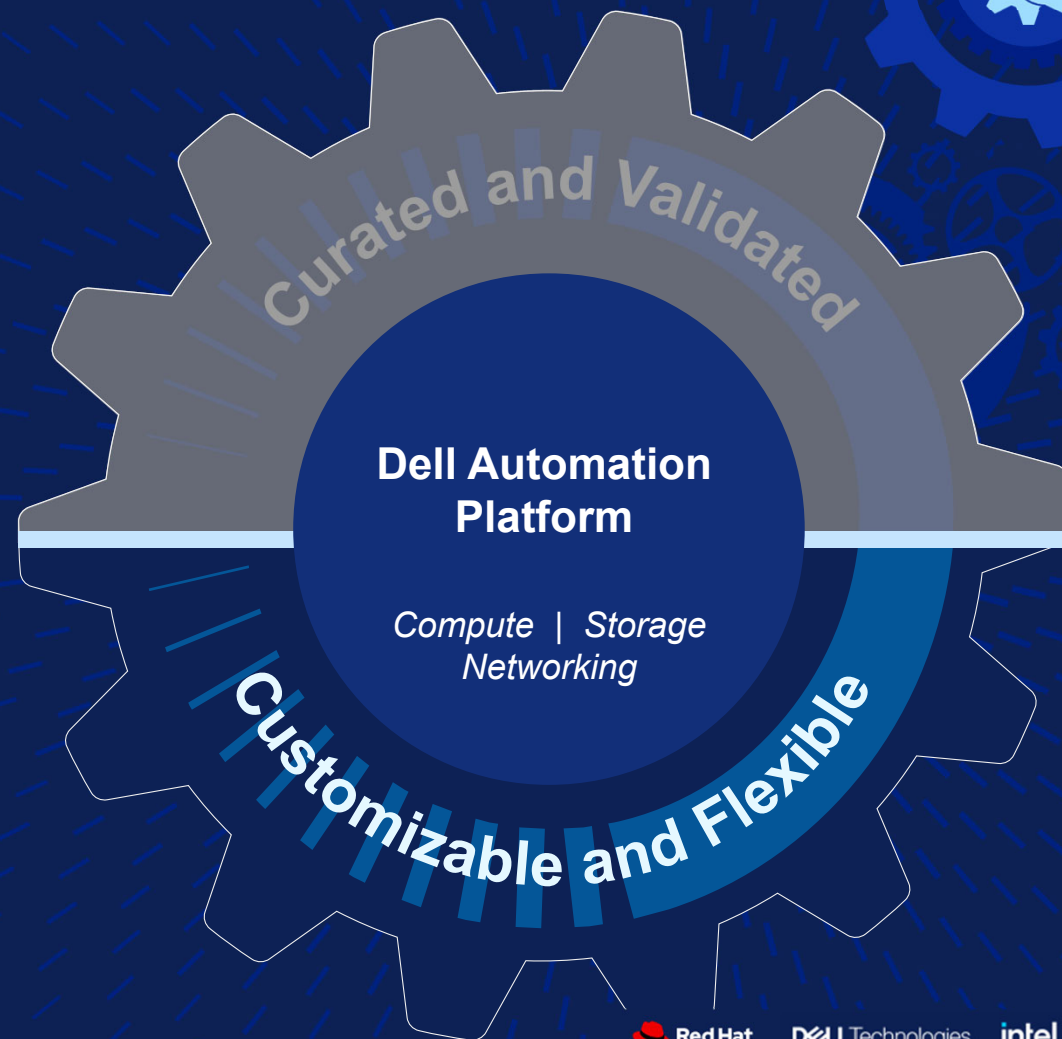


Grafana

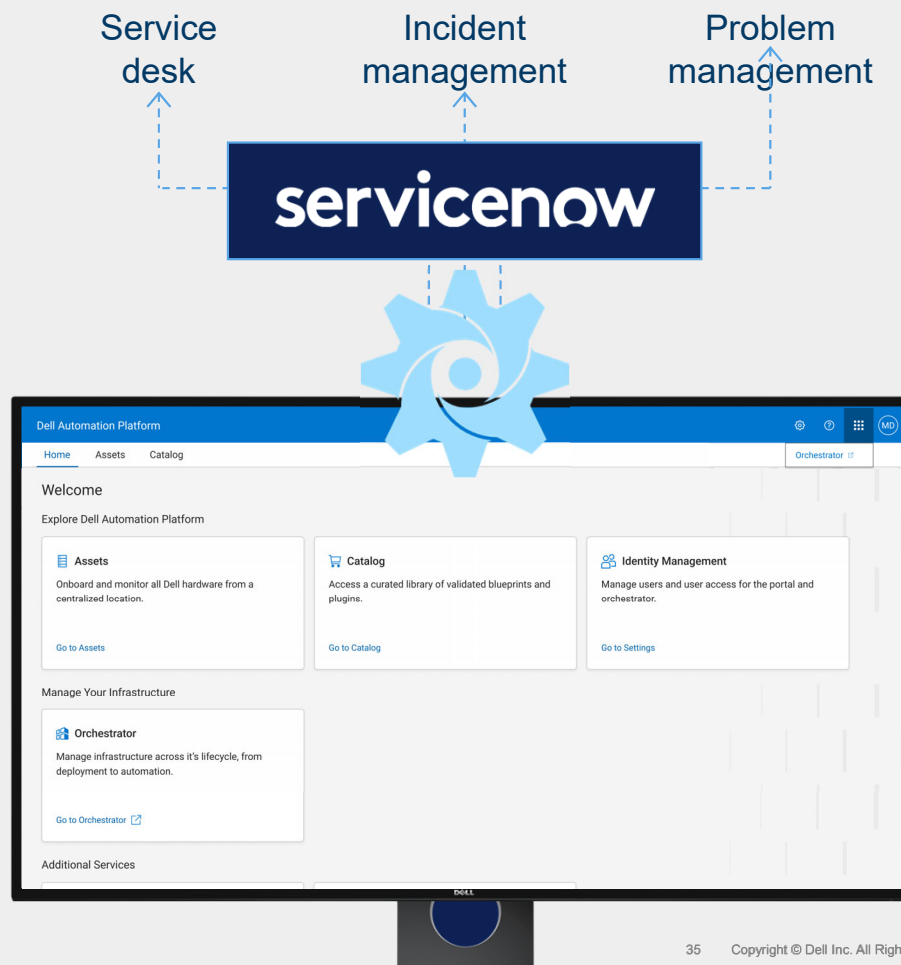


## Build your own

Blueprint and Orchestrate software  
based on your needs to run on flexible  
and dynamic hardware



# Strategic Ecosystem Integrations



35 Copyright © Dell Inc. All Rights Reserved.

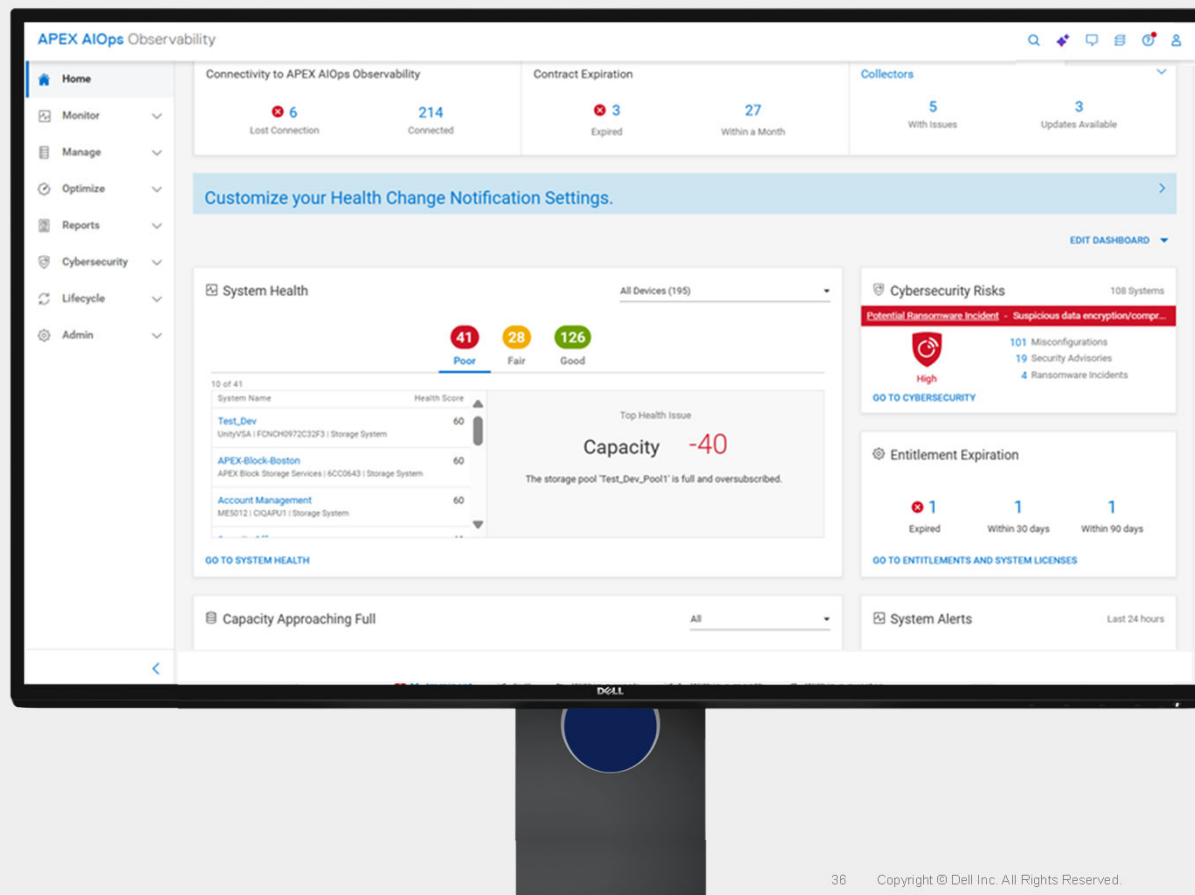
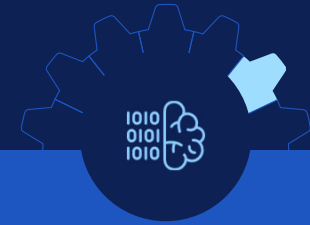


## Embed Dell Automation Platform within existing processes

- Automate support processes with direct integration into ServiceNow
- Equip stakeholders with familiar support and services tools
- Expedite time-to-resolution for priority incidents



# Observability and AIOps



## Seamless extension to Dell AIOps capabilities

- Predictive failure insights for proactive capacity planning, maintenance, and incident prevention
- Aggregate data, including logs, metrics, events, network packets, alerts, and more
- Apply machine learning algorithms and advanced analytics to the collected data to identify patterns, correlations, and anomalies
- Drift management and event correlation

Infrastructure &  
application catalog

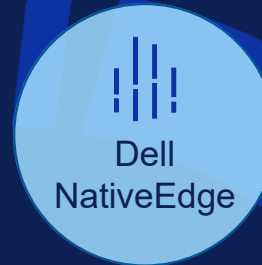
Orchestrator –  
SaaS or On-Prem

Central Portal –  
SaaS or On-Prem

Strategic ecosystem  
integrations

Secure, Zero Touch  
onboarding

Observability  
& Dell AIOps



intel

Red Hat

DELL Technologies  
NativeEdge

AMD

NUTANIX

NVIDIA

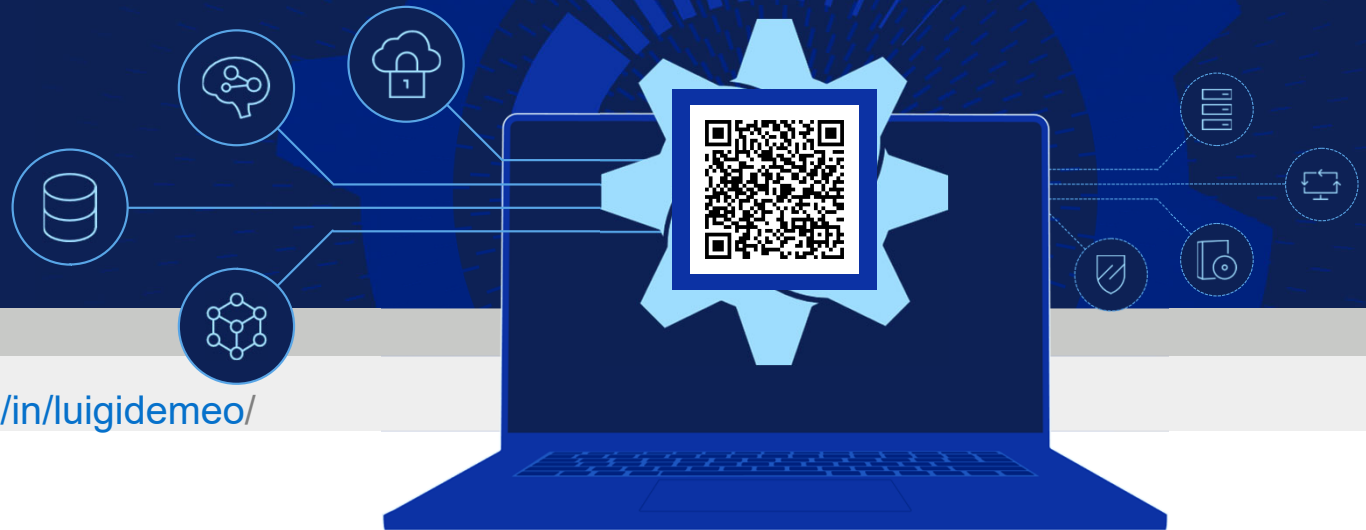
vmware  
by Broadcom

# Dell Automation Platform

We automate, so you can innovate

# Thank you

Web: [Dell Automation Platform](#)  
or mail to [luigi.demeo@dell.com](mailto:luigi.demeo@dell.com)



Follow on: <https://www.linkedin.com/in/luigidemeo/>

**DELL**Technologies