



Connect

Red Hat Ansible Automation Platform & KI

Aufbau einer selbstheilenden AIOps-Infrastruktur

2025-11-18

Darmstadt, Germany





Dr. Jason Breitweg

Senior Technical Account Manager - Ansible
Red Hat

Tobias Michelis

Specialist Solution Architect - Ansible
Red Hat



Foundation of automation fuels AI innovation



Agenda

- > Foundation of automation fuels AI innovation
- > Unlock AIOps with Red Hat Ansible
- > AI building blocks: Red Hat AI and Ansible Lightspeed
- > Lab overview



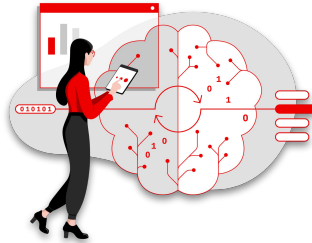
Automation is the key to successful AI adoption

Questions organizations must address when looking to adopt AI at an enterprise level



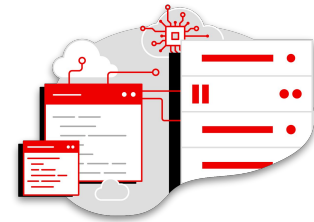
Infrastructure readiness

Is your infrastructure (networks, storage, data, monitoring, load balancers, applications) fully connected and optimized for AI workloads?



Real-time response to alerts and conditions

Once your AI and observability tools trigger events, do you have automated response and remediation in place to resolve them?



Confidence in acting on AI inferences

Are you confident in your ability to control the automation that's running in your environment?



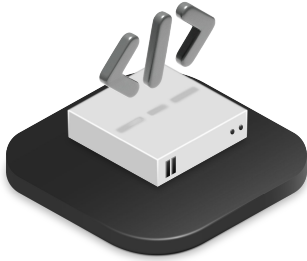
Lab overview



A common platform for scaling automation across environments



Networking



OS



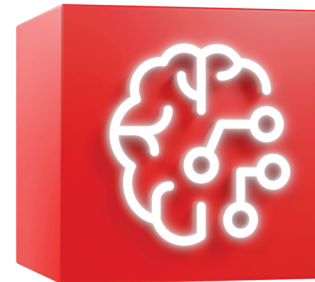
Cloud



Virtualization



App delivery

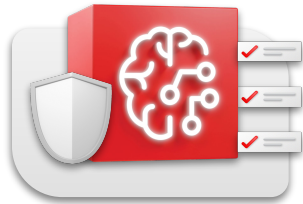


AI



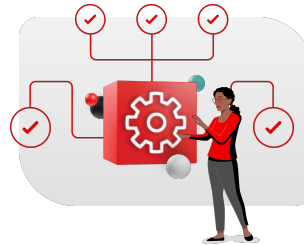
Establish a reliable AI foundation. Enable ongoing AI innovation.

Standardize AI infrastructure operations



- Simplify AI infrastructure deployment, usage, and scaling.
- Provide lifecycle management for consistency and repeatability.
- Accelerate time to value for developers consuming the AI platform.

Unlock AIOps



- Identify and address potential issues proactively.
- Resolve common, repetitive tasks via actionable advice from generative AI.
- Provide automated remediation, reducing MTTR.

Ensure policy compliance



- Apply safeguards around your AI solutions for better outcomes and control.
- Ensure AI is aligned to key internal and compliance policies.



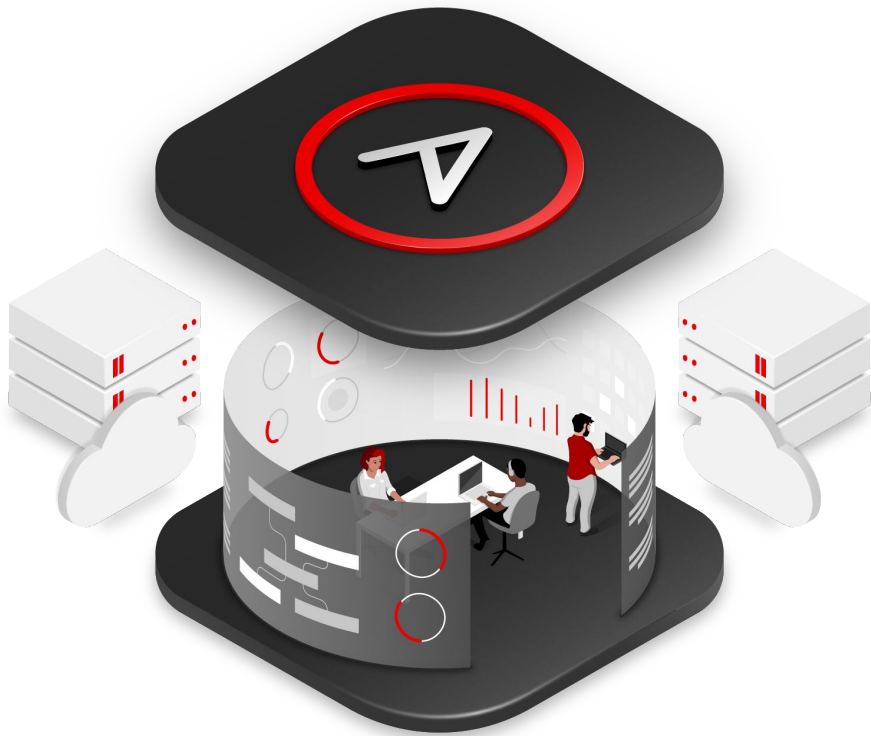
Unlock AIOps with Red Hat Ansible Automation Platform

Path to value



Unlock AIOps

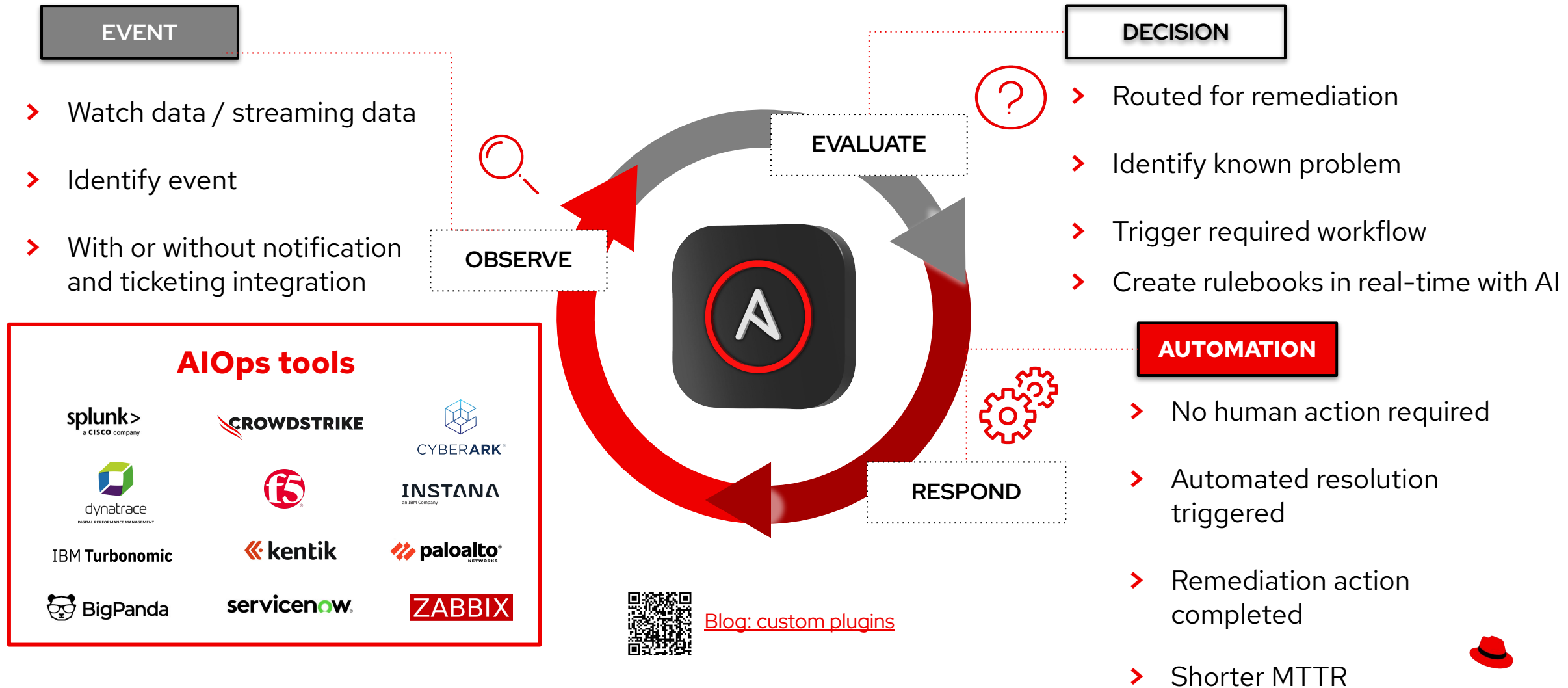
Red Hat Ansible is built to turn intelligence into action – at scale



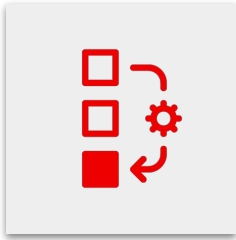
- ✓ **Event-Driven Ansible.** Engineered to turn intelligence into action.
- ✓ **Industry-leading technology ecosystem.** Ansible works with the tools you already have, and can help you better orchestrate the AIOps processes you have in place.
- ✓ **Comprehensive automation capabilities.** If your tools can see it, Ansible can automate it.



Event-Driven Ansible: Intelligence into action



AI Ops use cases that Red Hat Ansible can help you take on TODAY



Self-healing Infrastructure

Leverage Red Hat AI solutions with Event-Driven Ansible to fully realize self-healing infrastructure end to end powered by the latest AI solutions.



Support and incident ticket enrichment

Use Red Hat Insights or other third party solutions to coordinate unknown events from Event-Driven Ansible and provide context for IT infrastructure engineers.



Cost + resource optimization

Red Hat Insights can identify optimizations around nodes, clusters and projects attached to AI persona needs, with the option to execute optimizations in automated workflows to abstract the user from AI infrastructure.



Customer story: AIOps in action

"We've also integrated intelligent observability from Dynatrace, which uses AI to proactively identify any unusual patterns in our environment before triggering Event-Driven Ansible to resolve the incident and enable application recovery,"



Mutua Madrileña adopts automation as standard with Red Hat



Software and services

Red Hat® Ansible®
Automation Platform

Mutua Madrileña, Spain's leading insurer, has more than 60 platforms managed by its middleware department. This environment is complex—especially following multiple mergers and acquisitions—but crucial to support the company's digital needs. In line with its Digital Transformation plan, the middleware team implemented Dynatrace for intelligent observability and Red Hat Ansible Automation Platform. This allowed the team to automate platform provisioning and accelerate incident resolution using event-driven automation. This standard, automated process can be replicated in any environment to accelerate time to market, reduce operating costs, and free up skilled workers to focus on innovation.



Headquarters

Insurance

11,900+ employees

Benefits

- ▶ Standardized automation procedures and repeatable

"Choosing Red Hat Ansible Automation Platform was one of the **best decisions we've ever made**...Combining observability with self-healing has improved resolution times and reduced service downtime. **We saw a 50% reduction in service tickets.**"

- **Marta Ceciliano**

Head of Middleware, Automation,
and Observability

Source: Red Hat case study. "[Mutua Madrileña adopts automation as standard with Red Hat](#)"



AI building blocks: Essential prerequisites for activating AIOps

Red Hat AI and Ansible Lightspeed

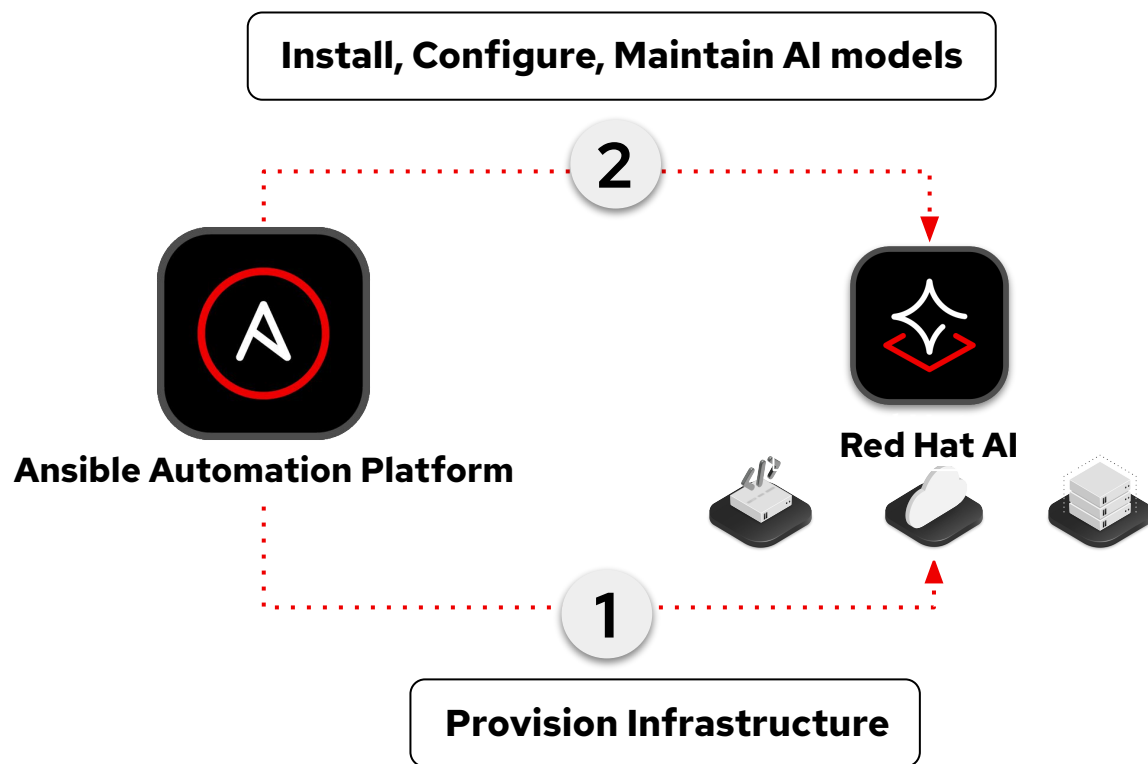




Standardize AI infrastructure operations

Install, configure and maintain AI infrastructure: Red Hat AI

CONSISTENCY



- ✓ Simplify AI model platform on prem, or cloud, deployment to a single click
- ✓ Ensure infrastructure is available, reliant, performant
- ✓ Manage AI same as existing infrastructure: no new resources required
- ✓ Accelerate time to value for developers consuming AI platform
- ✓ Enable fast, consistent, repeatable AI infrastructure setup and lifecycle, reducing risk of errors





Red Hat Ansible Lightspeed **Coding Assistant**

Generate Ansible Playbooks, Ansible Roles, single tasks, or multiple tasks from a single prompt

Flexible deployment options: SaaS, on-premise, or hybrid options

Content explanations to build user expertise and confidence that generated content will work as intended

Trained on Ansible data sets using Ansible Galaxy, GitHub, and other open source repos.

Content source matching to establish trust with referenced data sources

Model customization to further optimize and refine code generation using enterprise-specific data sets

Pre- and post-processing adds extra layer of optimization by with review and enforcement of Ansible best practices and syntax



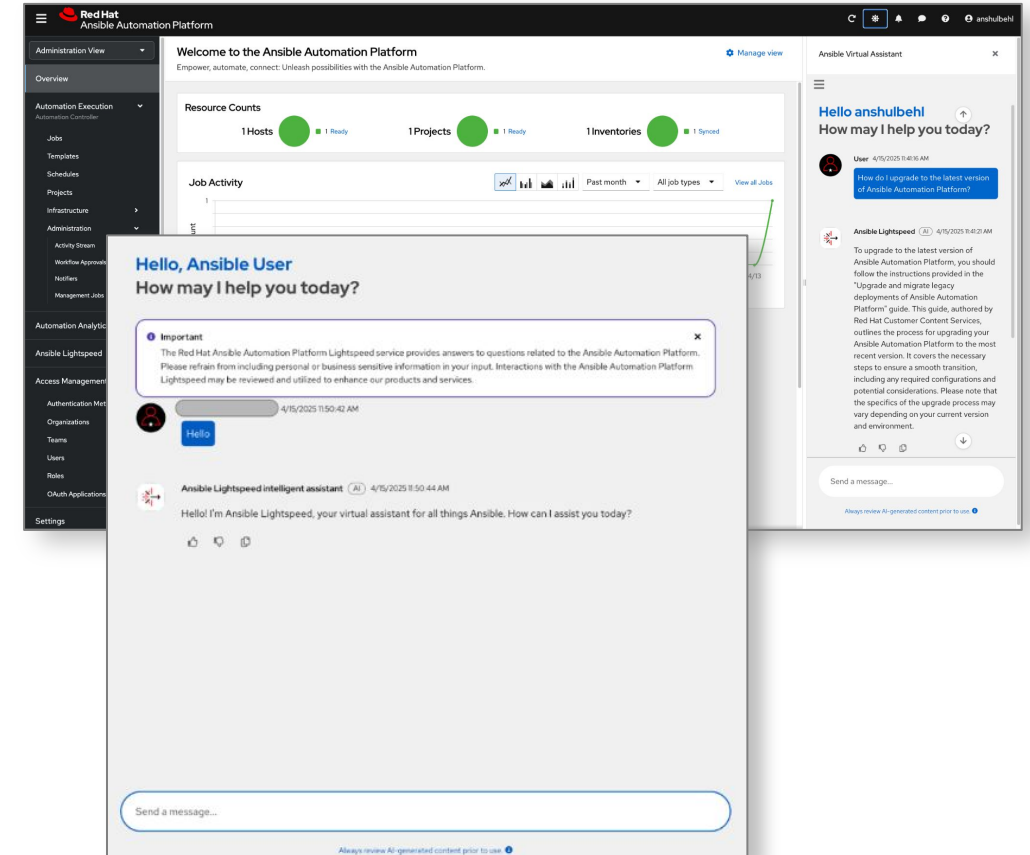


Introducing the Red Hat Ansible Lightspeed **intelligent assistant**

The Ansible administrator who never takes a day off

PLATFORM ASSISTANCE

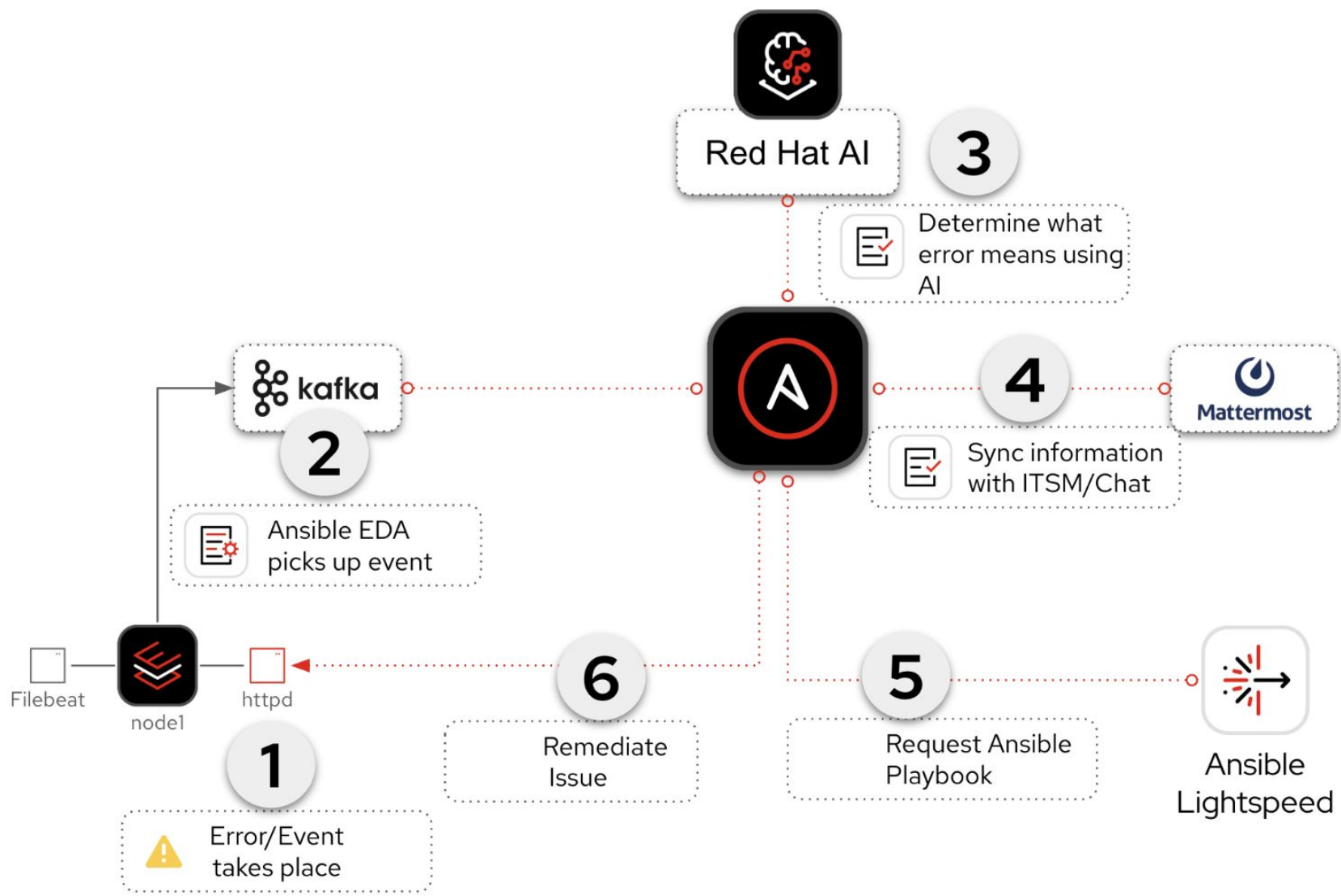
- ❑ **Intuitive chat assistant** embedded directly into Ansible Automation Platform UI
- ❑ Contextual support for **faster troubleshooting, platform onboarding, and the day-to-day management** of automation.
- ❑ Includes links to references and resources for **source validation** and **accelerated learning**.
- ❑ Flexible model connectivity: Red Hat AI or 3rd-party models
- ❑ **Example prompts:**
 - "What is an execution environment?"
 - "How do I upgrade to the latest version of Ansible Automation Platform?"
 - "How do I activate Ansible Lightspeed with watsonx Code Assistant?"
- ❑ **Coming soon:** understand conditions within your Ansible Automation Platform deployment
 - "Why did my automation job fail?"
 - "List all inventories in my Ansible Automation Platform deployment."
 - ""Show me the status of all running jobs and their progress."



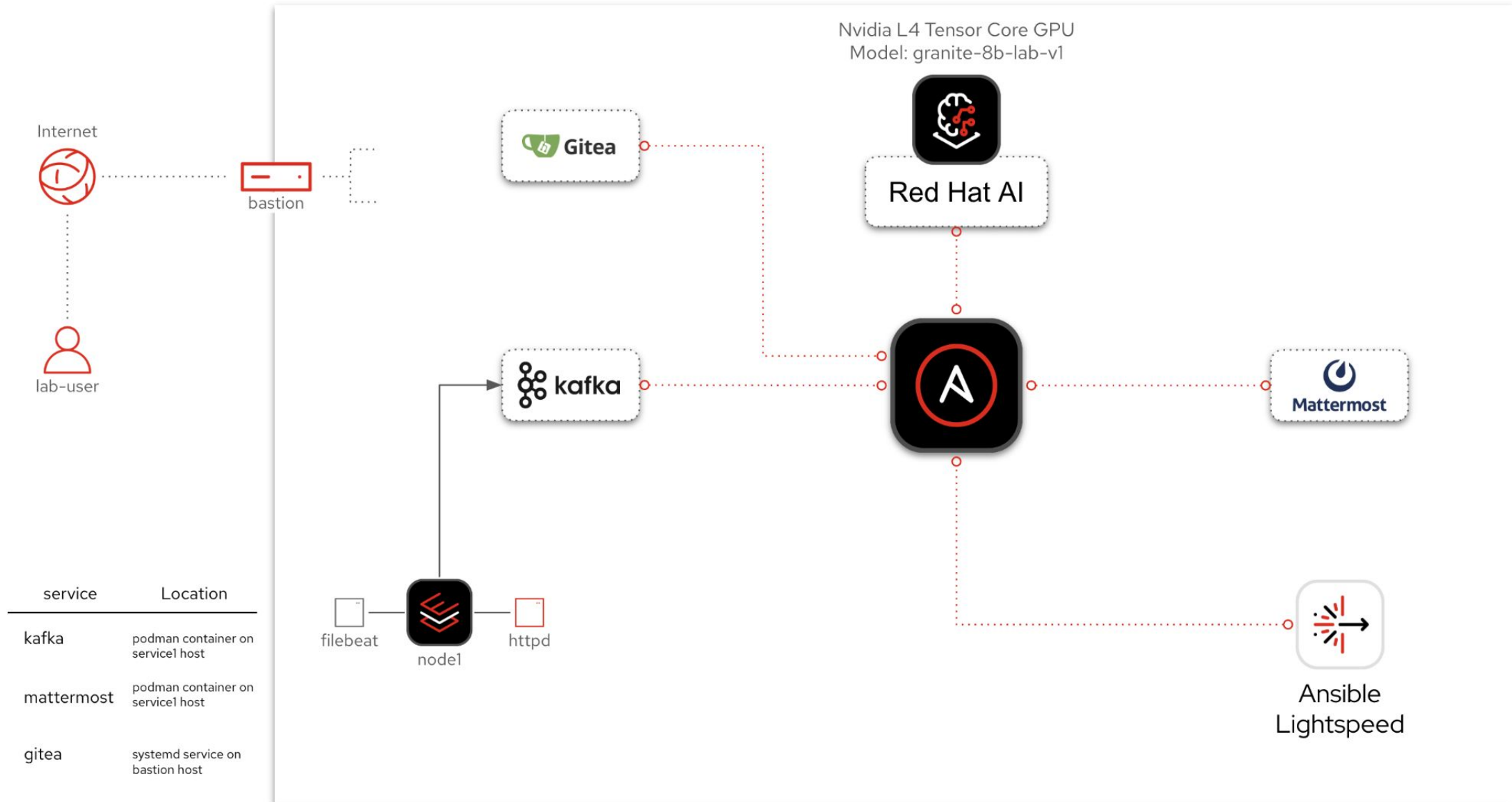
ONBOARD FASTER

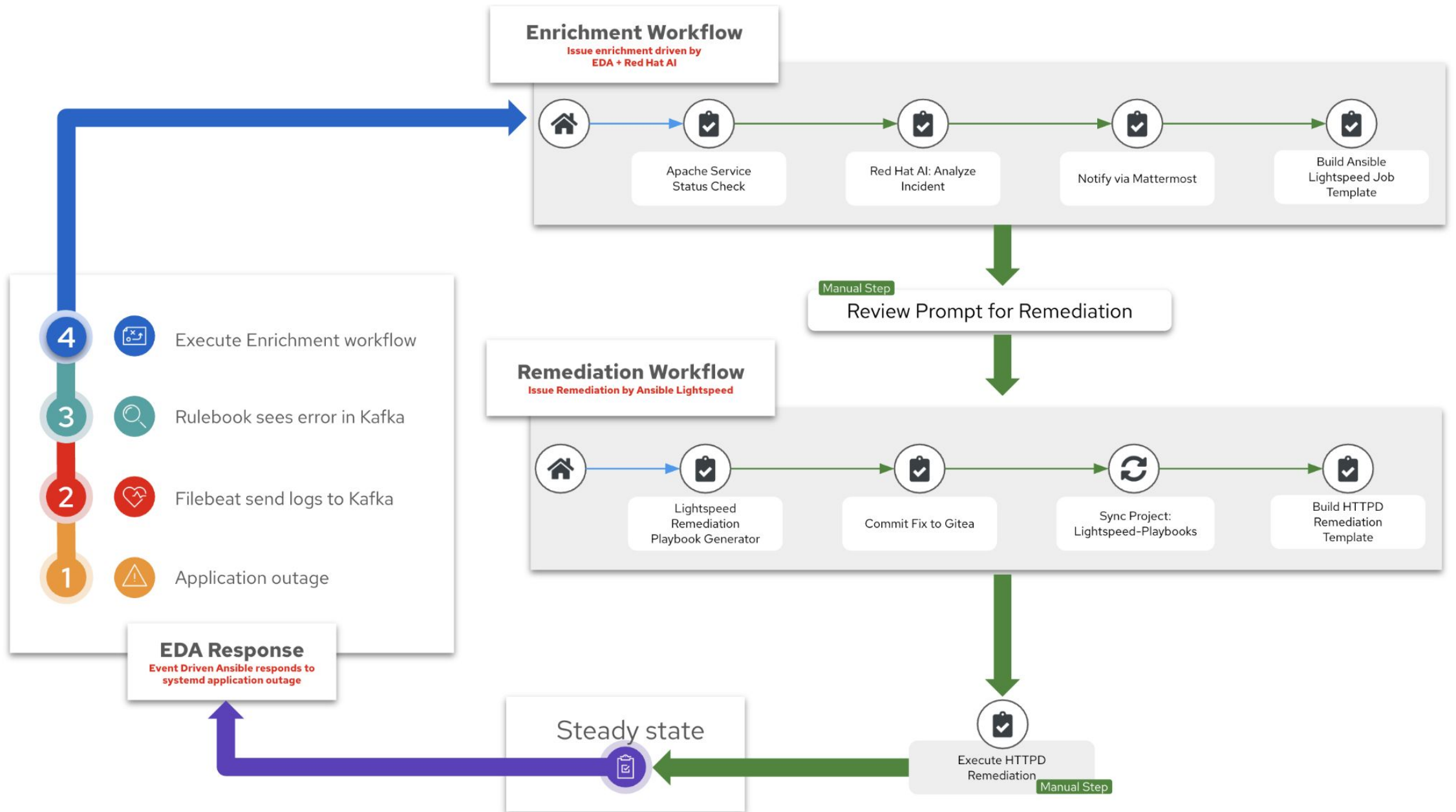
REDUCE FRUSTRATION / FRICTION

SIMPLIFY PLATFORM ADMINISTRATION



Lab Topology





Resources

red.ht/AIOps_demo



red.ht/AAP_AI_KBASE



red.ht/whatsnewAAP



red.ht/AlusecaseswithAAP



red.ht/AnsibleDeveloperProgram





Jetzt Session bewerten!

Einfach QR-Code scannen,
Session aus der Liste wählen
und bewerten. **Vielen Dank!**

red.ht/rhsc-darmstadt-feedback



Connect

Thank you



linkedin.com/company/red-hat



facebook.com/redhatinc



youtube.com/user/RedHatVideos



twitter.com/RedHat

